

## SPECIFICATION

- 1.Rating:6V AC ,1.8A
- 1.Contact resistance :  $\leq 50\text{m}\Omega$
- 2.Insulation resistance :  $\geq 100\text{M}\Omega$
- 3.Withstand voltage : 250VAC
- 5.Insertion and extraction force : 3-30N
- 6.life test : 10,000 cycles
- 7.Waterproof Lever: IP67

⑨	P2_HOUSING	PA-9T,BLACK		1
⑧	P1_HOUSING	PA-9T,BLACK		1
⑦	M4F_ASSIST PIN	Stainless Steel		1
⑥	M5_GND-CONTACT	PHOSPHOR BRONZE		1
⑤	M6_R2-CONTACT	PHOSPHOR BRONZE		1
④	M4_TIP-CONTACT	Titanium Copper Alloy	Au Plated	1
③	MQ_ON CONTACT	PHOSPHOR BRONZE		1
②	MP_OS CONTACT	PHOSPHOR BRONZE		1
①	M1_R-CONTACT	PHOSPHOR BRONZE		1
	ITEM DESCRIPTIONs	MATERIAL	FINISH	QTY

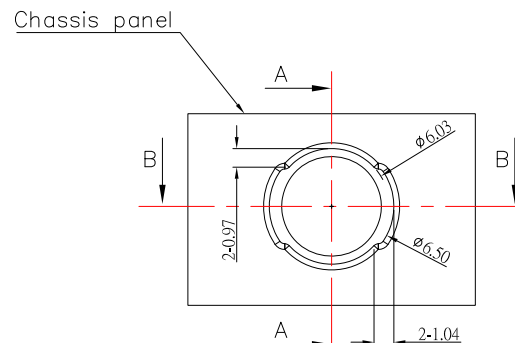
**CONTACT** 建倚科技股份有限公司  
CONTACT TECHNOLOGY CORP.

TOLERANCE UNLESS OTHERWISE STATED:	Up to 5	±0.2	3RD. ANGEL'S		UNITS	MM
	Above 5 ~ 15	±0.3				
	Above 15 ~ 30	±0.4				
	Above 30 ~ 50	±0.5				
	Angle	±0.3°				

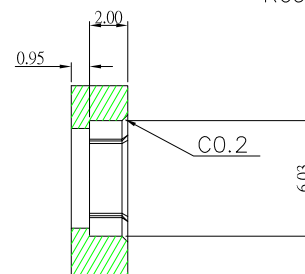
ITEM	DESCRIPTIONS	MATERIAL	FINISH	QTY
DRAWN BY: DATE	MAT'L	TITLE	JACK	
Jack Lu 12/19/23	FINISH	MODLE	3.5mm PHONE JACK 防水型	
CHECKED BY: DATE	SCALE	1 : 1	DWG NO. PJ-WP32390A-S457	SIZE A4
Jacky Chen 12/19/23	SHEET NO.	1 of 1	PART NO. PJ-WP32390A-S457	VER R
APPROVED BY: DATE				
Tony Kao 12/19/23				

7			
ITEM NO.	DESCRIPTION	DRAWN	DATE

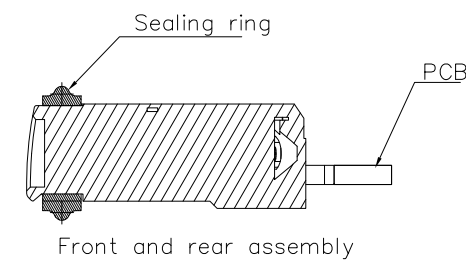
IP67



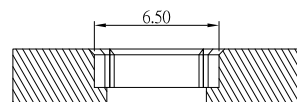
Recommended seal



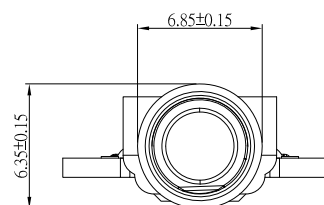
A-A SECTION



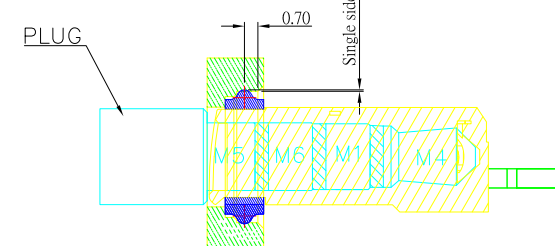
Front and rear assembly



B-B SECTION



Dimensions after  
O-ring assembly



Schematic diagram of male  
and female head pointing



建倚科技股份有限公司  
CONTACT TECHNOLOGY CORP.

TOLERANCE UNLESS  
OTHERWISE STATED :

Up to 5 ±0.2  
Above 5 ~ 15 ±0.3  
Above 15 ~ 30 ±0.4  
Above 30 ~ 50 ±0.5  
Angle ±0.3°

3RD.  
ANGEL'S



UNITS

MM

DRAWN BY: Jack Lu  
CHECKED BY: Jacky Chen  
APPROVED BY: Tony Kao

DATE: 12/19/23  
DATE: 12/19/23  
DATE: 12/19/23

MATL  
FINISH  
SCALE  
SHEET NO.

1 : 1  
1 of 1

TITLE  
MODLE  
DWG NO.  
PART NO.

JACK  
3.5mm PHONE JACK 防水型  
PJ-WP32390A-S457  
PJ-WP32390A-S457

SIZE  
A4  
VER  
R