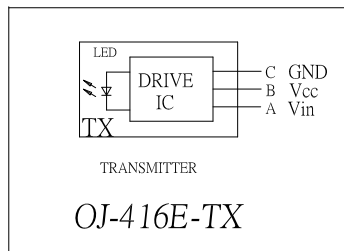
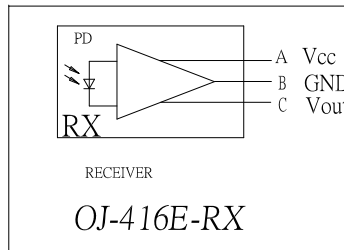


OJ-416E-XXx-S214

TX	1	16 Mbps
RX	2	25 Mbps



SPECIFICATIONS:

- DISSIPATION CURRENT: 5.0 mA.
- OPERATING VOLTAGE(Vcc): 2.7-5.5 V.
- INSERTION FORCE: 4.0Max Kgs
- EXTRACTION FORCE: 0.6Kgs TO 4.0 Kgs
- ENDURANCE: 500 CYCLES
- OPERATING TEMPERATURE: -25 TO +85 °C.

ITEM	DESCRIPTION	MATERIAL	PLATING&COLOR	QTY
⑦	COVER 2	PBT	BLACK COLOR	1
⑥	SHELL	SPCC	Cu+Ni+Sn	1
⑤	IC	BRASS		1
④	COVER 1	PBT	BLACK COLOR	1
③	SPRING	SUS		1
②	HOUSING	PBT	BLACK COLOR	1
①	HOUSING	PBT	BLACK COLOR	1

CONTACT 建倚科技股份有限公司
CONTACT TECHNOLOGY CORP.

TOLERANCE UNLESS OTHERWISE STATED:
Up to 5 ±0.2
Above 5 ~ 15 ±0.3
Above 15 ~ 30 ±0.4
Above 30 ~ 50 ±0.5
Angle ±0.3

3RD. ANGEL'S



UNITS

MM

DRAWN BY: Jack Lu
CHECKED BY: Jacky Chen
APPROVED BY: Tony Kao

DATE: 08/11/20
DATE: 08/11/20
DATE: 08/11/20

MAT'L	TITLE	JACK
FINISH	MODLE	OPTICAL JACK
SCALE	DWG NO.	OJ-416E-XXx-S214
SHEET NO.	PART NO.	OJ-416E-XXx-S214

SIZE: A4
VER: R

ITEM NO.	DESCRIPTION	DRAWN	DATE