



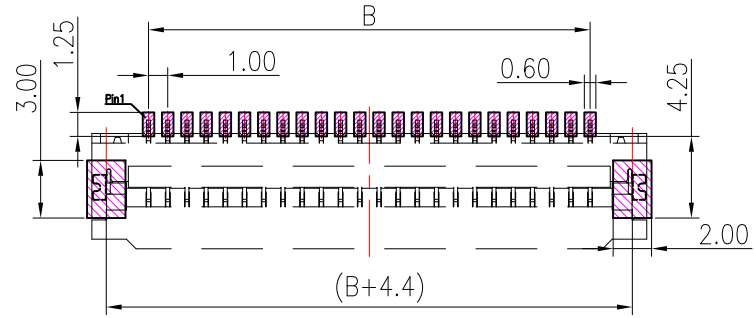
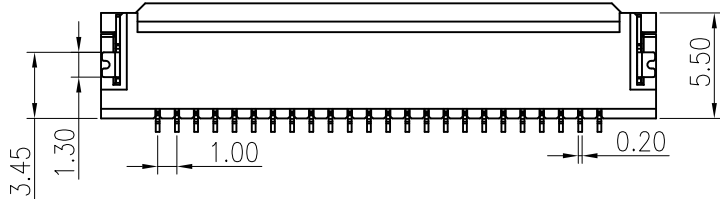
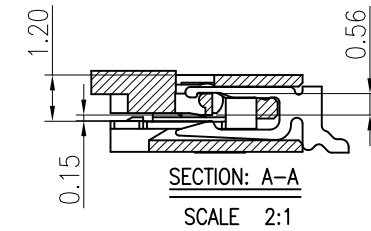
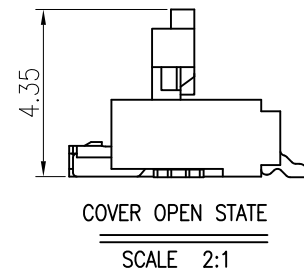
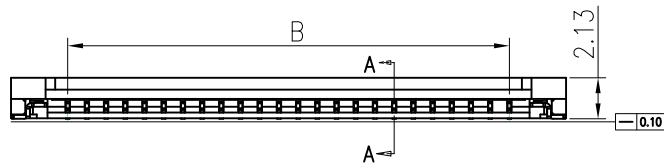
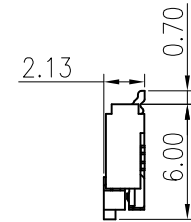
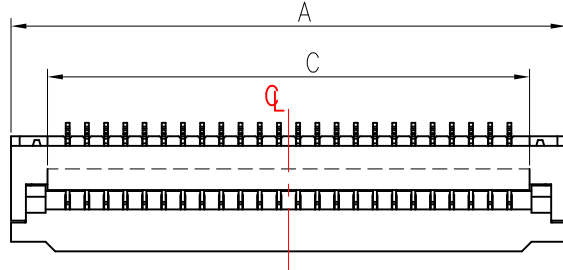
NOTES:

1. MATERIAL:

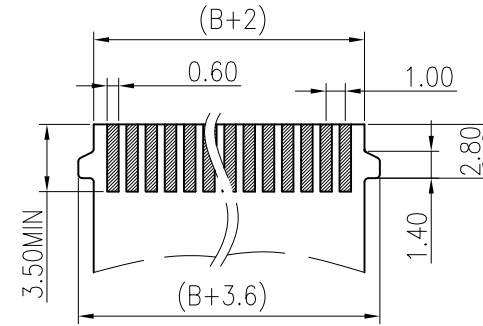
- 1.1 HOUSING: LCP,COLOR:BEIGE
- 1.2 ACTUATOR: LCP,COLOR:BLACK
- 1.3 CONTACT: PHOSPHOR BRONZE
- 1.4 FITTING NAIL: BRASS

2. PLATING:

- 2.1 CONTACT: GOLD OR TIN PLATED ON NICKEL OVERALL
- 2.2 LEG: TIN PLATED ON NICKEL OVERALL



RECOMMEND PCB LAYOUT



APPLICABLE FFC

PIN NO.	A	B	C
28	32.90	27.00	29.00
32	36.90	31.00	33.00

CONTACT 建倚科技股份有限公司
CONTACT TECHNOLOGY CORP.

TOLERANCE UNLESS OTHERWISE STATED:
 Up to 5 ±0.2
 Above 5 ~ 15 ±0.3
 Above 15 ~ 30 ±0.4
 Above 30 ~ 50 ±0.5
 Angle ±0.3°

3RD. ANGEL'S



UNITS

MM

DRAWN BY:	DATE	MAT'L	TITLE	CONNECTOR
Jack Lu	05/22/20		MODLE	FPC 1.0mm 掀蓋式 H:2.13mm 蝴蝶扣
CHECKED BY:	DATE	FINISH	DWG NO.	FPC10L-21xx-B2-S304
Jacky Chen	05/22/20		PART NO.	FPC10L-21xx-B2-S304
APPROVED BY:	DATE	SCALE	SHEET NO.	1 of 1
Tony Kao	05/22/20	1 : 1		

ITEM NO	DESCRIPTION	DRAWN	DATE
1	更新PIN選項	Jack	052220