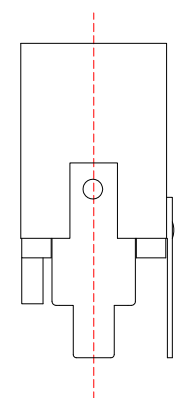
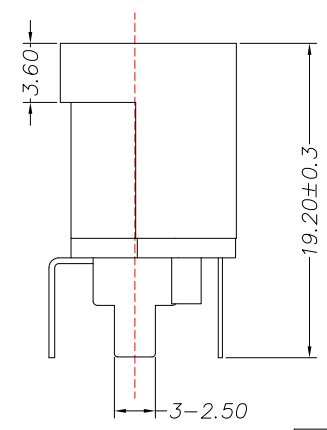
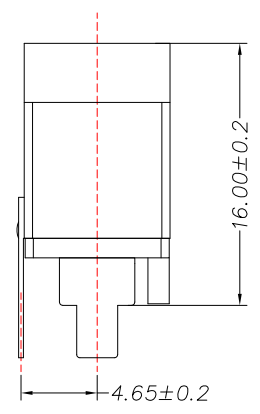
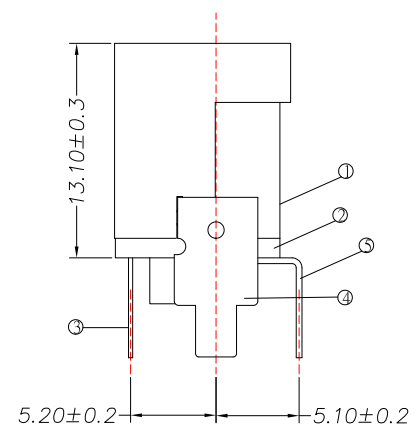


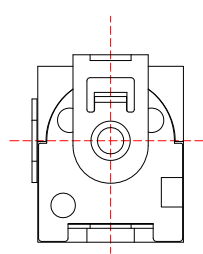
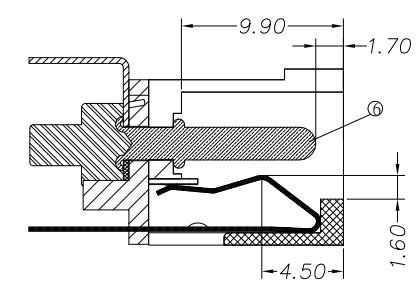
PCB LAYOUT  
TOP VIEW



SPECIFICATION

- Rating : DC 30V, 3.0A
- Contact resistance :  $\leq 30m\Omega$
- Insulation resistance :  $\geq 100M\Omega$
- Withstand voltage : 500VAC
- Insertion and extraction force : 3-30N
- life test : 5,000 cycles

MODEL NO.	DC-D3002AV-x
SCHEMATIC	
CENTER PIN	$\phi 2.0mm$
	$\phi 2.5mm$



NO.	DESCRIPTION	QTY	MATERIAL	FINISH
6	PIN	1	H59	Sn-Plating
5	TERMINAL-4#	1	BRASS	Sn-Plating
4	TERMINAL-3#	1	PHOSPHOR BRONZE	Sn-Plating
3	TERMINAL-5#	1	BRASS	Sn-Plating
2	COVER	1	PPA	BLACK
1	HOUSING	1	PPA	BLACK

**CONTACT** 建倚科技股份有限公司  
CONTACT TECHNOLOGY CORP.

TOLERANCE UNLESS OTHERWISE STATED:  
 Up to 5 ±0.2  
 Above 5 ~ 15 ±0.3  
 Above 15 ~ 30 ±0.4  
 Above 30 ~ 50 ±0.5  
 Angle ±0.3°

3RD. ANGEL'S UNITS MM

DRAWN BY:	DATE	MAT'L	TITLE	JACK
Jack Lu	02/29/24		MODLE	DC JACK
CHECKED BY:	DATE	SCALE	DWG NO.	DC-D3002AV-x-S457
Jacky Chen	02/29/24	1 : 1	PART NO.	DC-D3002AV-x-S457
APPROVED BY:	DATE	SHEET NO.	1 of 1	
Tony Kao	02/29/24			

ITEM NO.	DESCRIPTION	DRAWN	DATE