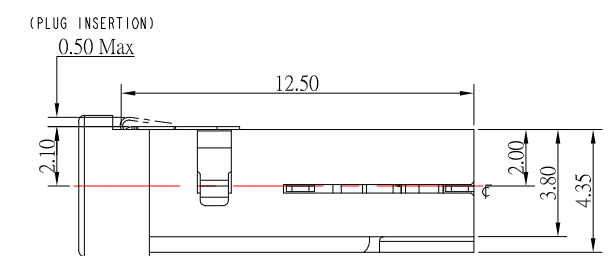
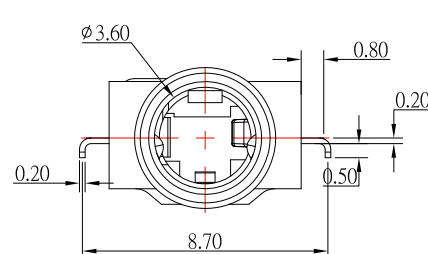
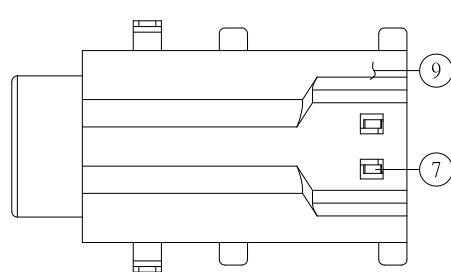
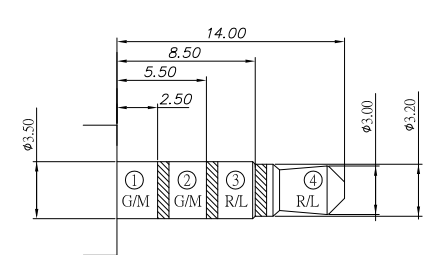
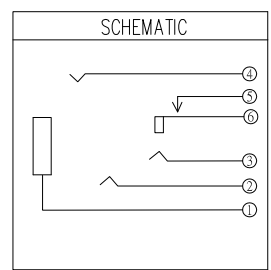


P.C.B LAYOUT



SPECIFICATION

1. Rating : DC 5V , 0.5A ;
2. Contact resistance :  $\leq 70m\Omega$  ;
3. Insulation resistance :  $\geq 100M\Omega$  ;
4. Withstand voltage : 500VAC ;
5. Insertion force : 20N Max;
6. Extraction force :  $12\pm 5N$ ;
7. life test : 5,000 cycles °



NO.	DESCRIPTION	QTY	MATERIAL	PLATING
9	INSERT MOLDING	1	PA9T	BLACK
8	HOUSING	1	PA9T	BLACK
7	7# CONTACT FOOT	1	STAINLESS STEEL PLATE	
6	6# CONTACT FOOT	1	PHOSPHOR BRONZE	Au-Plating
5	5# CONTACT FOOT	1	PHOSPHOR BRONZE	Au-Plating
4	4# CONTACT FOOT	1	PHOSPHOR BRONZE	Au-Plating
3	3# CONTACT FOOT	1	PHOSPHOR BRONZE	Au-Plating
2	2# CONTACT FOOT	1	PHOSPHOR BRONZE	Au-Plating
1	1# CONTACT FOOT	1	PHOSPHOR BRONZE	Au-Plating

**CONTACT** 建倚科技股份有限公司  
**CONTACT TECHNOLOGY CORP.**

TOLERANCE UNLESS OTHERWISE STATED:  
 Up to 5 ±0.2  
 Above 5 ~ 15 ±0.3  
 Above 15 ~ 30 ±0.4  
 Above 30 ~ 50 ±0.5  
 Angle ±0.3°

3RD. ANGEL'S

UNITS MM

DRAWN BY:	DATE	MAT'L	TITLE	JACK
Jack Lu	12/15/22			
CHECKED BY:	DATE	FINISH	MODLE	PHONE JACK
Jacky Chen	12/15/22			
APPROVED BY:	DATE	SCALE	DWG NO.	PJ-S32339-S214
Tony Kao	12/15/22	1 : 1		
		SHEET NO.	PART NO.	PJ-S32339-S214
		1 of 1		

ITEM NO.	DESCRIPTION	DRAWN	DATE
3	更新材質	Jack	121522
2	更新料號	Jack	011722
1	更新圖面	Jack	111121

SIZE A4  
 VER R3