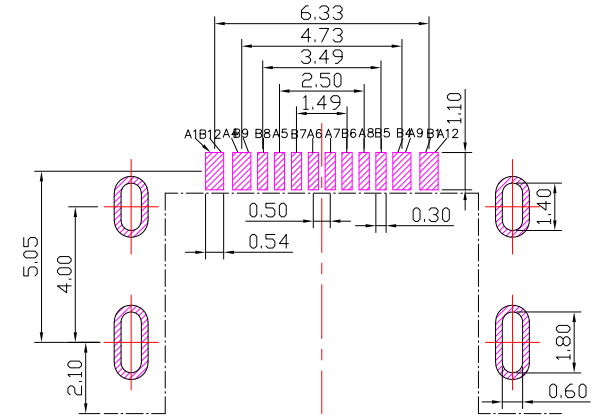
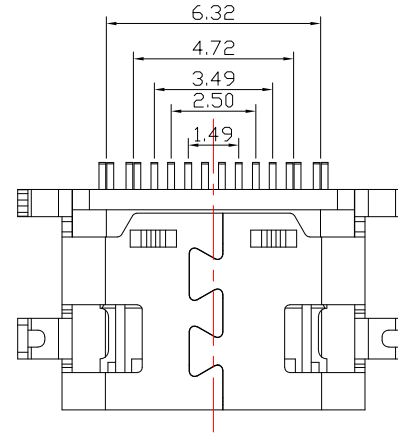
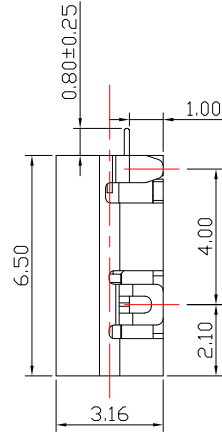
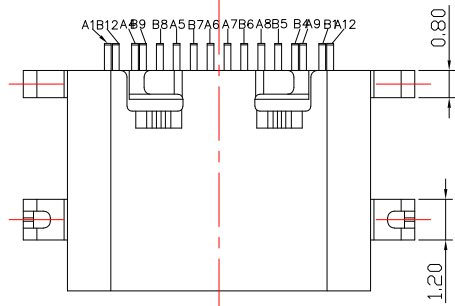
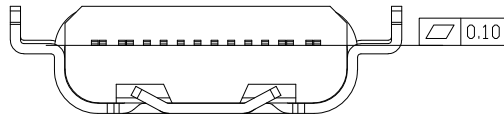




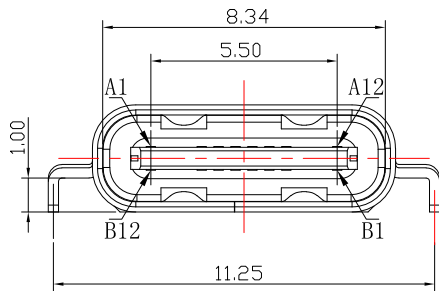
SBC-160M1-20x-S338

鍍層厚度:

| |
|-------------|
| Blank : 1u" |
| 2 : 15u" |
| 3 : 30u" |



PCB LAYOUT



| | | | |
|-----|------|-----|-------|
| A1 | GND | B12 | GND |
| A2 | | B11 | |
| A3 | | B10 | |
| A4 | VBUS | B9 | VBUS |
| A5 | CC1 | B8 | SBU 2 |
| A6 | D+ | B7 | D- |
| A7 | D- | B6 | D+ |
| A8 | SBU1 | B5 | CC 2 |
| A9 | VBUS | B4 | VBUS |
| A10 | | B3 | |
| A11 | | B2 | |
| A12 | GND | B1 | GND |

SPECIFICATIONS

Electrical:

1. Rating: 20V , 5.0 A
2. Dielectric Withstand Voltage: 100V AC
3. Contact Resistance: 40 mΩ Max
4. Insulation Resistance: 100 MΩ Min

Mechanical:

1. Connector Mate and Unmate Force
 - 1.1 Mate force: 5~20 N
 - 1.2 Unmate force: 8~20 N

Material:

1. Housing: PA9T
2. Contact: C7025
3. Shell: SUS

Finish:

1. Contact: Plated Gold in Mating Area ;
Tin Plated on Solder Balls ;
Nickel under plated overall
2. Shell: Nickel under Plated surface layer



TOLERANCE UNLESS OTHERWISE STATED :
 Up to 5 ±0.2
 Above 5 ~ 15 ±0.3
 Above 15 ~ 30 ±0.4
 Above 30 ~ 50 ±0.5
 Angle ±0.3

3RD. ANGEL'S



UNITS MM

| | | | | |
|--------------|----------|-----------|----------|-----------------------------|
| DRAWN BY: | DATE | MATL | TITLE | CONNECTOR |
| Jack Lu | 08/01/24 | | | |
| CHECKED BY: | DATE | FINISH | MODLE | USB TYPE C 2.0 沉板 板上H2.16mm |
| Jacky Chen | 08/01/24 | | | |
| APPROVED BY: | DATE | SCALE | DWG NO. | SBC-160M1-20x-S338 |
| Tony Kao | 08/01/24 | 1 : 1 | PART NO. | SBC-160M1-20x-S338 |
| | | SHEET NO. | 1 of 1 | |

| | | | |
|----------|-------------|-------|--------|
| 1 | 更新圖面 | Jack | 080124 |
| ITEM NO. | DESCRIPTION | DRAWN | DATE |