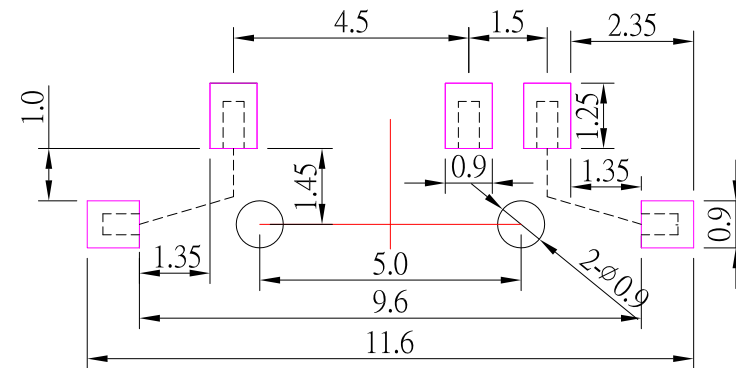
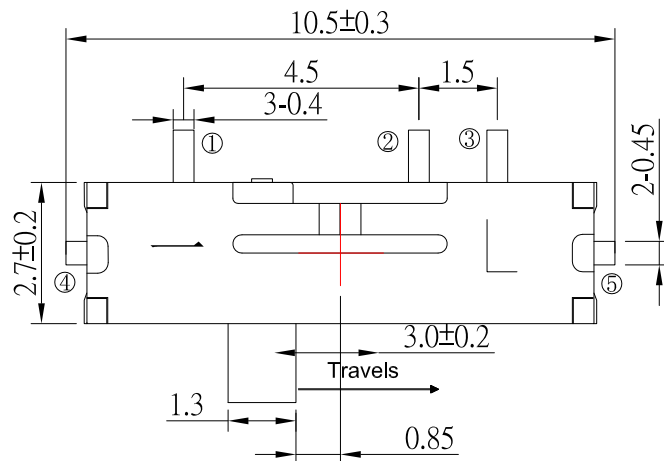




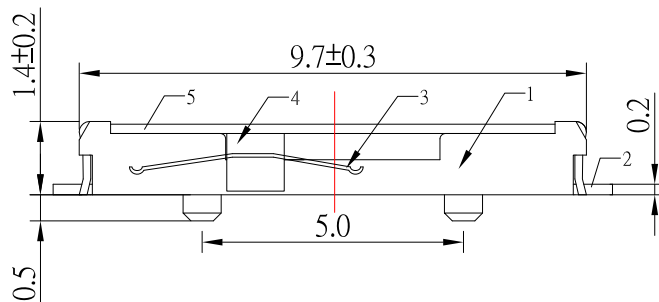
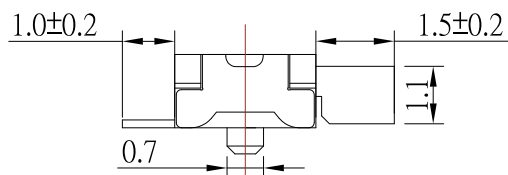
SS-C11AP1-x-S246

SLIDER COLOR :

Black : B
White : W

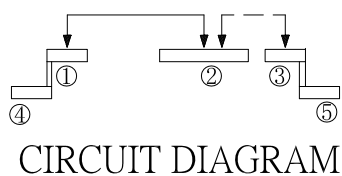


P.C.B LAND PATTERN



SPECIFICATIONS

Rating	DC 12V , 100mA
Contact Resistance	100mΩ Max
Insulation Resistance	100MΩ Min
Operating Force	150 ±50gf
Life	10,000 cycles



9	更新樣式	Jack	012121
8	新增尺寸	Jack	080620
7	更新樣式	Jack	060320
6	更新圖面	Jack	040120
5	更新樣式	Jack	083019
4	更新材質	Jack	061119
3	更新CIRCUIT DIAGRAM	Jack	082418
2	新增pcb layout尺寸	Jack	081418
1	更新Operating Force	Jack	110217
ITEM NO.	DESCRIPTION	DRAWN	DATE

CONTACT 建倚科技股份有限公司
CONTACT TECHNOLOGY CORP.

TOLERANCE UNLESS OTHERWISE STATED :
Up to 5 ±0.2
Above 5 ~ 15 ±0.3
Above 15 ~ 30 ±0.4
Above 30 ~ 50 ±0.5
Angle ±0.3°

3RD. ANGEL'S



UNITS MM

DRAWN BY:	DATE	MAT'L	TITLE	SWITCH
Jack Lu	03/15/22			
CHECKED BY:	DATE	FINISH	MODLE	SLIDE SWITCH 2 段式 , 行程 3.0mm /磷銅
Jacky Chen	03/15/22			
APPROVED BY:	DATE	SCALE	DWG NO.	SS-C11AP1-x-S246
Tony Kao	03/15/22	1 : 1		
		SHEET NO.	PART NO.	SS-C11AP1-x-S246
		1 of 1		
			SIZE	A4
			VER	R10