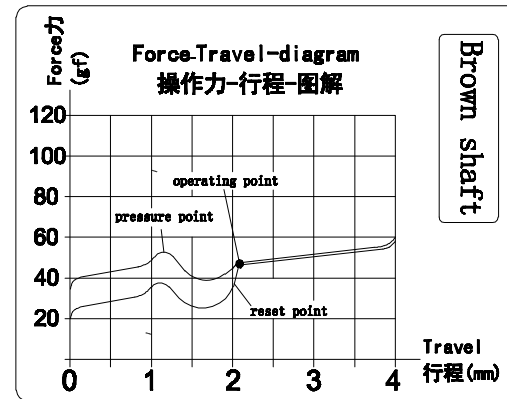
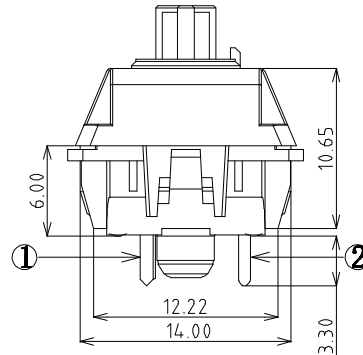
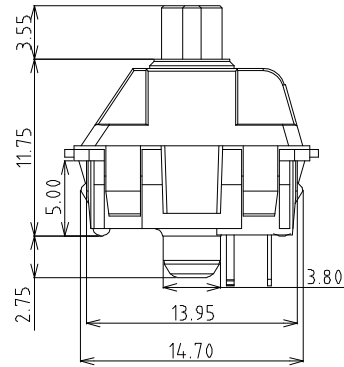
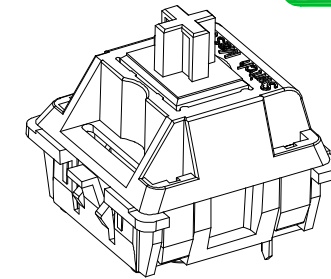
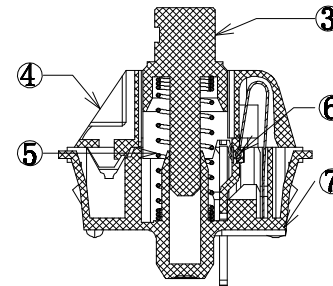
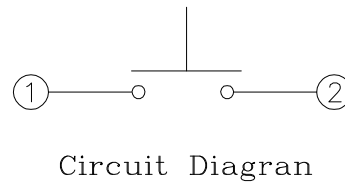
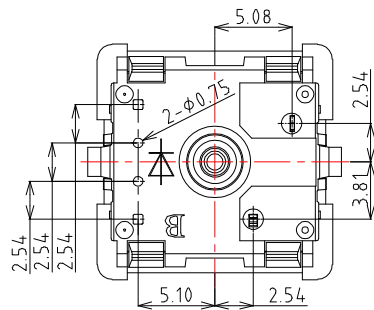


PCB Layout (Pattern Side)



**Specification :**

1. Rating :12 VAC/DC max. 2 VDC min.  
10mA AC/DC max. 10  $\mu$ A DC min.
2. Contact Resistance : 200 $\Omega$  Max
3. Insulation Resistance :100M $\Omega$  Min  
(DC100V)
4. Withstand Voltage :AC500V (50-60Hz)  
for 1 minute
5. Bounce Time:  $\leq$ 5msec (at 16 in/sec.  
actuation speed)
6. Operation Force :45 $\pm$ 15gf
7. Pressure Point Force :55 $\pm$ 15gf
8. Pretravel:2.0mm $\pm$ 0.4mm
9. Total travel:4.0 -0.3mm
10. Operating Life :50,000,000 Cycles(min)



Circuit Diagram

⑦	Base	—	1	Nylon	Black	—
⑥	contact	—	2	Silver alloy	Brushing Gold	—
⑤	Spring	—	1	Stainless Steel	—	—
④	Cover	—	1	Nylon	Black	—
③	Keystroke	—	1	POM	Brown(2322C)	—
②	Terminal	—	1	Brass	Plating Nickel	—
①	Reed	—	1	Copper Alloy	—	—
ITEM	PART NAME	TER'NO.	QTY.	MATERIAL	FINISHING	REMARK

**CONTACT** 建倚科技股份有限公司  
**CONTACT TECHNOLOGY CORP.**

TOLERANCE UNLESS OTHERWISE STATED:  
Up to 5 ±0.2  
Above 5 ~ 15 ±0.3  
Above 15 ~ 30 ±0.4  
Above 30 ~ 50 ±0.5  
Angle ±0.3

3RD. ANGEL'S

UNITS MM

DRAWN BY:	DATE	MAT'L	TITLE	SWITCH
Jack Lu	12/16/15	FINISH	MODLE	
CHECKED BY:	DATE	SCALE	DWG NO.	
Jacky Chen	12/16/15	1 : 1	KS-01T-45-S105	
APPROVED BY:	DATE	SHEET NO.	PART NO.	
Tony Kao	12/16/15	1 of 1	KS-01T-45-S105	
			SIZE	
			A4	
			VER	
			R	