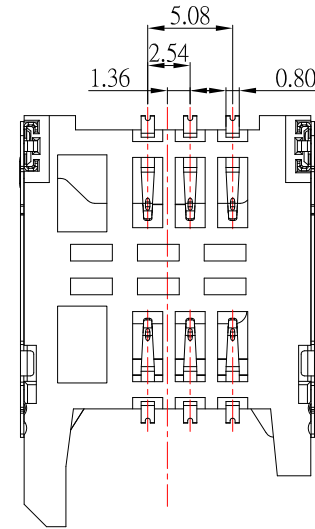
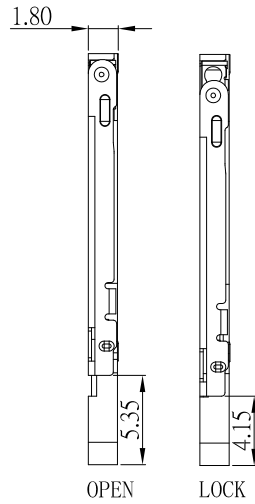
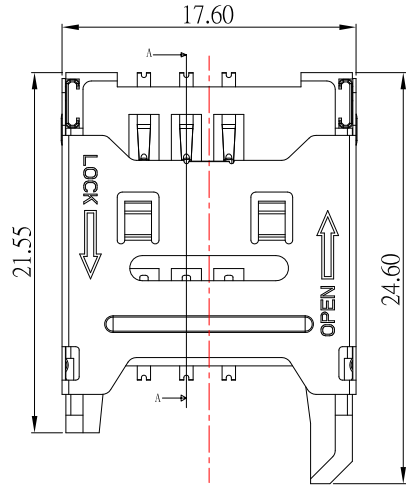
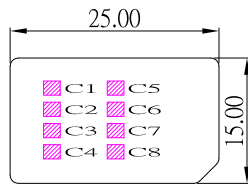
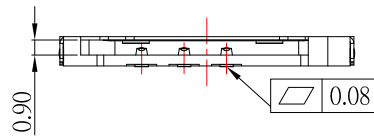


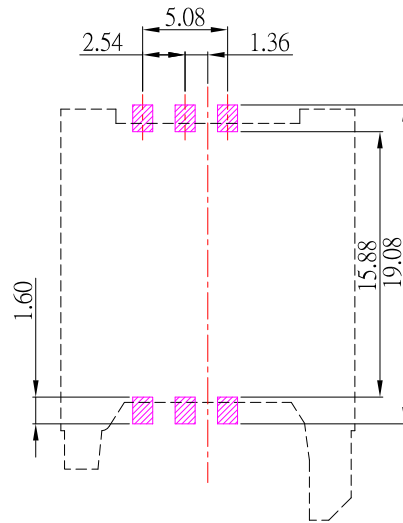
SECTION A-A



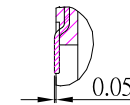
PIN NO.	PIN NAME
C 1	Supply Voltage Vcc
C 2	Reset (RST)
C 3	Clock (CLK)
C 4	N/A
C 5	Ground
C 6	Programming Voltage Vpp
C 7	I/O
C 8	N/A



SIM CARD



P.C.B LAYOUT MOUNTING PATTERN  
TOP VIEW



**MATERIALS**

- HOUSING : THERMOPLASTIC (UL 94V-0).
- TERMINAL : PHOSPHOR BRONZE
- SHELL : STAINLESS STEEL.

**Finish:**

- Finish: CONTACT: PLATED GOLD IN MATING AREA ;  
GOLD PLATED ON SOLDER BALLS ;  
NICKEL UNDER PLATED OVERALL
- SHELL: NICKEL UNDER PLATED SURFACE LAYER

**SPECIFICATION**

- CURRENT RATING : 0.5 A. MAX.
- DIELECTRIC WITHSTANDING VOLTAGE :  
100V AC R.M.S. FOR 1 MINUTE.
- INSULATION RESISTANCE : 100MΩ MIN.AT 100V DC.
- CONTACT RESISTANCE : 30mΩ MAX.
- OPERATING TEMPERATURE : -30°C TO +85°C.

ITEM NO.	DESCRIPTION	DRAWN	DATE

**CONTACT** 建倚科技股份有限公司  
**CONTACT TECHNOLOGY CORP.**

TOLERANCE UNLESS OTHERWISE STATED:  
Up to 5 ±0.2  
Above 5 ~ 15 ±0.3  
Above 15 ~ 30 ±0.4  
Above 30 ~ 50 ±0.5  
Angle ±0.3

3RD. ANGEL'S



UNITS MM

DRAWN BY:	DATE	MAT'L	TITLE	CONNECTOR
Jack Lu	06/12/15	FINISH	MODLE	SIM CARD SOCKET 1.8H 6PIN PH2.54mm
CHECKED BY:	DATE	SCALE	DWG NO.	SIM-5110607S-S312
Jacky Chen	06/12/15	1 : 1	PART NO.	SIM-5110607S-S312
APPROVED BY:	DATE	SHEET NO.	1 of 1	SIZE A4
Tony Kao	06/12/15	VER	R	