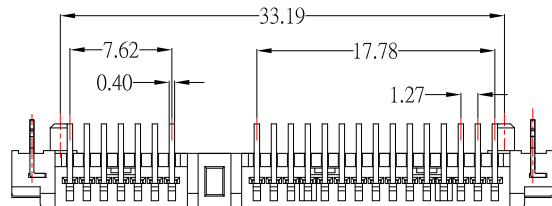
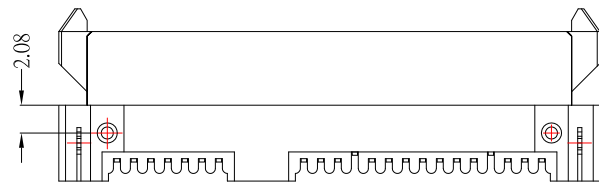
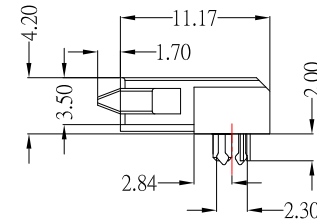
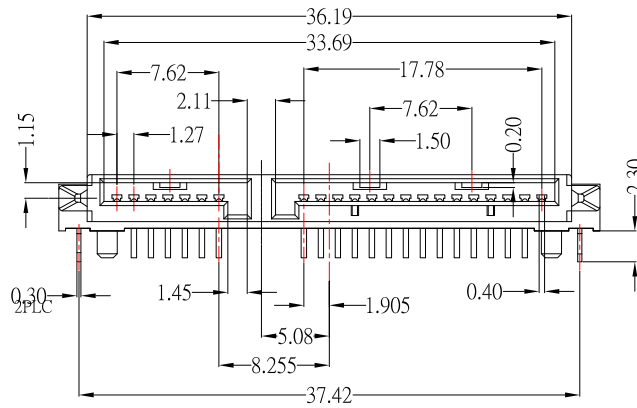


**RECOMMENDED PCB LAYOUT**



**SPECIFICATION:**

**1.MATERIAL:**

- 1.1 HOUSING: LCP , UL 94V-0 , Black
- 1.2 CONTACT: PHOSPHOR BRONZE
- 1.3 BOARD LOCK: BRASS

**2.Finish:**

- 2.1 CONTACT: PLATED GOLD IN MATING AREA ;  
TIN PLATED ON SOLDER BALLS ;  
NICKEL UNDER PLATED OVERALL
- 2.2 BOARD LOCK: TIN PLATED ON SOLDER BALLS ;  
NICKEL UNDER PLATED OVERALL

**CONTACT** 建倚科技股份有限公司  
**CONTACT TECHNOLOGY CORP.**

TOLERANCE UNLESS OTHERWISE STATED :  
Up to 5 ±0.2  
Above 5 ~ 15 ±0.3  
Above 15 ~ 30 ±0.4  
Above 30 ~ 50 ±0.5  
Angle ±0.3°

3RD. ANGEL'S



UNITS MM

DRAWN BY:	DATE	MAT'L	TITLE	CONNECTOR
Jack Lu	05/25/15		MODLE	SATA 7+15P母座塑高4.2板上DIP不带杠
CHECKED BY:	DATE	FINISH	DWG NO.	SATA-F22-42H1-S268
Jacky Chen	05/25/15	SCALE 1 : 1	PART NO.	SATA-F22-42H1-S268
APPROVED BY:	DATE	SHEET NO.	1 of 1	
Tony Kao	05/25/15			
				SIZE A4
				VER R

ITEM NO.	DESCRIPTION	DRAWN	DATE