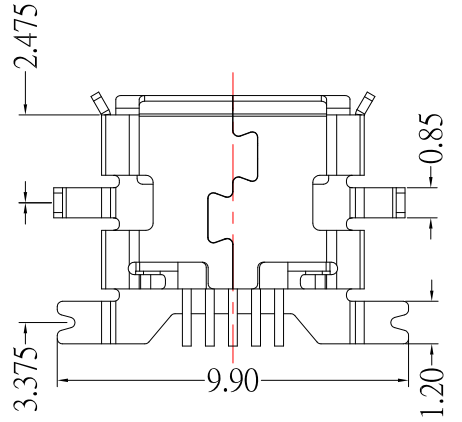
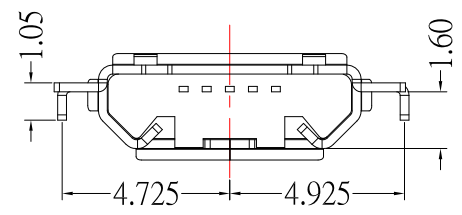
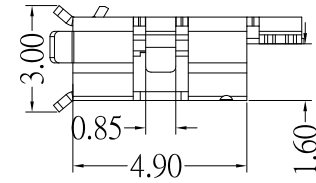
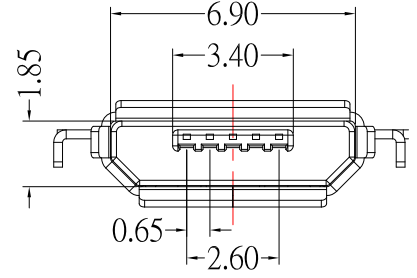
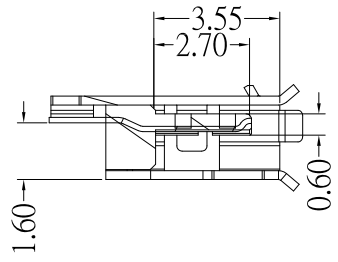


P.C.B LAYOUT MOUNTING PATTERN



SPECIFICATIONS

Electrical:

- 1.Current Rating: 1.8A(pin1,5)Max, 1.0A(pin2,3,4)Max
- 2.Contact Resistance: 30 mΩ Max
- 3.Dielectric Withstanding Voltage:100 V AC for 1 min
- 4.Insulation Resistance: 100 MΩ Min

Mechanical:

- 1.Connector Mate and Unmate Force
Mate force: 3.57 kgf (Max)
Unmate force: 1.0 kgf (Min)

Material:

- 1.Housing: LCP, Black
- 2.Contact: Phosphor Bronze
- 3.Shell: Brass

Finish:

- 1.Contact: Plated Gold in Mating Area ;
Gold Plated on Solder Balls ;
Nickel under plated overall
- 2.Shell: Tin under Plated surface layer



TOLERANCE UNLESS OTHERWISE STATED :
Up to 5 ±0.2
Above 5 ~ 15 ±0.3
Above 15 ~ 30 ±0.4
Above 30 ~ 50 ±0.5
Angle ±0.3

3RD. ANGEL'S



UNITS

MM

DRAWN BY:	DATE	MAT'L	TITLE	CONNECTOR
Jack Lu	04/16/19			
CHECKED BY:	DATE	FINISH	MODLE	MICRO USB 5B/F 沉板 1.6mm (四脚前插后贴)
Jacky Chen	04/16/19			
APPROVED BY:	DATE	SCALE	DWG NO.	MRUSB-5B-M9TN1-S347
Tony Kao	04/16/19	1 : 1	PART NO.	MRUSB-5B-M9TN1-S347
		SHEET NO.	1 of 1	
				SIZE A4
				VER R1

1	更新圖面樣式	Jack	041619
ITEM NO.	DESCRIPTION	DRAWN	DATE