



# MRUSB-5B-ED9x-S347

SHELL鍍層:

|    |
|----|
| TN |
| NI |

## NOTES:

### 1.MATERIAL:

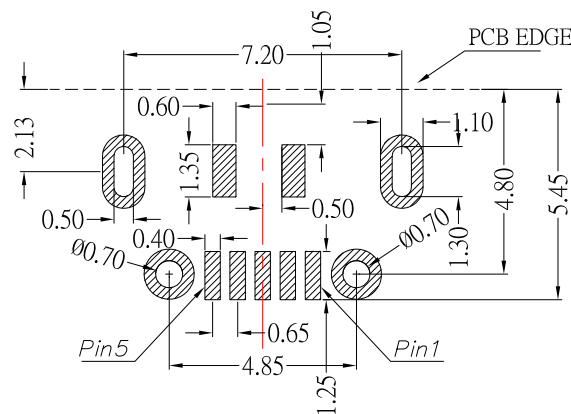
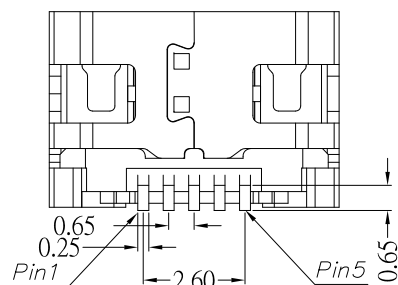
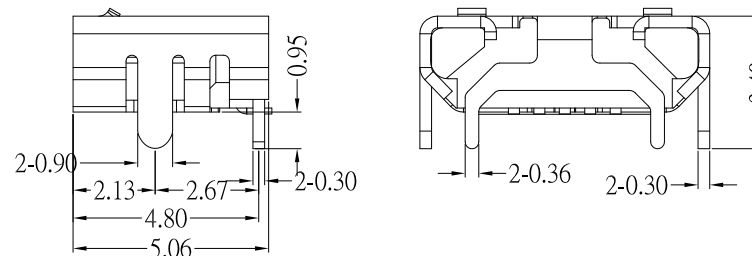
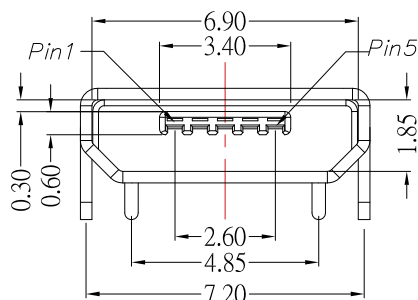
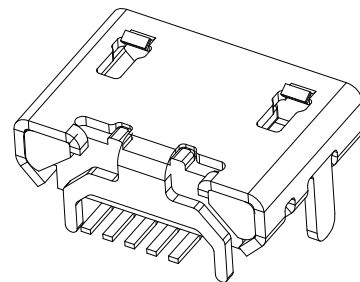
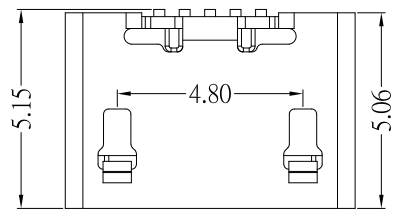
- 1.1 HOUSING: LCP
- 1.2 CONTACT: PHOSPHOR BRONZE
- 1.3 SHELL: BRASS

### 2.Finish:

- 2.1 Contact: Plated Gold in Mating Area ;  
Gold Plated on Solder Balls ;  
Nickel under plated overall
- 2.2 Shell: Tin or Nickel under Plated surface layer

### 3.SPECIFICATION:

- 3.1 CURRENT RATING: 1.0 A MAX
- 3.2 DIELECTRIC WITHSTANDING VOLTAGE:  
100 V(ac) FOR 1min
- 3.3 CONTACT RESISTANCE: 30 mΩ MAX.
- 3.4 INSULATION RESISTANCE: 100 MΩ MIN.
- 3.5 TOTAL MATING FORCE: 3.57 Kgf MAX.
- 3.6 TOTAL UNMATING FORCE: 1.0 Kgf MIN.
- 3.7 LIFE: 10,000 CYCLES
- 3.8 TEMPERATURE RANGE: -30°C ~ +80°C



P.C.B LAYOUT MOUNTING PATTERN

**CONTACT** 建倚科技股份有限公司  
**CONTACT TECHNOLOGY CORP.**

TOLERANCE UNLESS OTHERWISE STATED:  
Up to 5 ±0.2  
Above 5 ~ 15 ±0.3  
Above 15 ~ 30 ±0.4  
Above 30 ~ 50 ±0.5  
Angle ±0.3

3RD. ANGEL'S

UNITS MM

|              |          |           |          |                                     |
|--------------|----------|-----------|----------|-------------------------------------|
| DRAWN BY:    | DATE     | MAT'L     | TITLE    | CONNECTOR                           |
| Jack Lu      | 07/05/18 |           |          |                                     |
| CHECKED BY:  | DATE     | FINISH    | MODLE    | MICRO USB 5BF 牛角型( PH7.15-4.85),無捲邊 |
| Jacky Chen   | 07/05/18 |           |          |                                     |
| APPROVED BY: | DATE     | SCALE     | DWG NO.  | MRUSB-5B-ED9x-S347                  |
| Tony Kao     | 07/05/18 | 1 : 1     | PART NO. | MRUSB-5B-ED9x-S347                  |
|              |          | SHEET NO. | 1 of 1   | SIZE A4                             |
|              |          |           |          | VER R1                              |

|          |             |       |        |
|----------|-------------|-------|--------|
| 1        | 新增SHELL鍍層選項 | Jack  | 070518 |
| ITEM NO. | DESCRIPTION | DRAWN | DATE   |