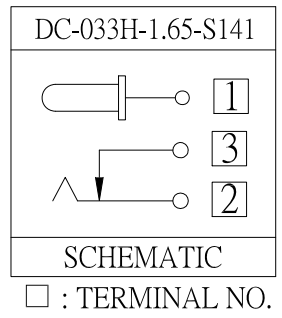
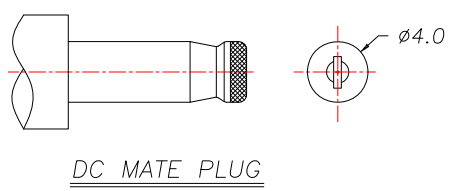


P.C.B Layout (Copper-sided view)

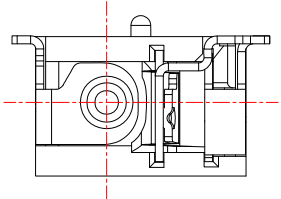


SPECIFICATION

1. Rating : DC 18V, 5.0A
2. Contact resistance : $\leq 30m\Omega$
3. Insulation resistance : $\geq 100M\Omega$
4. Withstand voltage : 500VAC
5. Insertion and extraction force : 3-30N
6. life test : 5,000 cycles



DC MATE PLUG



⑤	Shunt terminal		1	Brass	Silver plating
④	Tip spring		1	Phosphor bronze	Silver plating
③	Center pin terminal		1	Brass	Silver plating
②	Center pin		1	Brass	CuSn/Ni plating
①	Housing		1	PA9T	
NO.	DESCRIPTION		QTY	MATERIAL	REMARK

CONTACT 建倚科技股份有限公司
CONTACT TECHNOLOGY CORP.

TOLERANCE UNLESS OTHERWISE STATED :
 Up to 5 ±0.2
 Above 5 ~ 15 ±0.3
 Above 15 ~ 30 ±0.4
 Above 30 ~ 50 ±0.5
 Angle ±0.3°

3RD. ANGEL'S

UNITS MM

DRAWN BY:	DATE	MAT'L	TITLE	JACK
Jack Lu	10/07/15	FINISH	MODLE	DC JACK
CHECKED BY:	DATE	SCALE	DWG NO.	DC-033H-1.65-S141
Jacky Chen	10/07/15	1 : 1	PART NO.	DC-033H-1.65-S141
APPROVED BY:	DATE	SHEET NO.	1 of 1	
Tony Kao	10/07/15			

ITEM NO.	DESCRIPTION	DRAWN	DATE