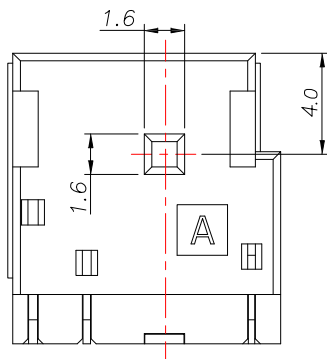


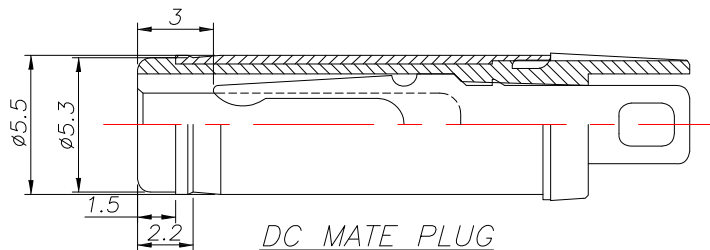
PCB LAYOUT MOUNTING PATTERN
(BOTTOM VIEW)



□: TERMINAL NO.

Model NO.	DC-074S
Schematic	
CENTER PIN	ø1.65 mm ø2.00 mm ø2.50 mm

DC-074S-x-S141
Center pin



DC MATE PLUG

SPECIFICATION

1. Rating : DC 25V 3.0A;
2. Contact resistance : $\leq 30m\Omega$;
3. Insulation resistance : $\geq 100M\Omega$ (DC500V);
4. Withstand voltage : 500VAC ;
5. Insertion and extraction force : 3-30N
6. life test : 5,000 cycles.

⑦	Ground shield	F	1	Brass	Nickel plating
⑥	Tip spring-2	4	1	Phosphor Bronze	Silver plating
⑤	Shunt terminal	3	1	Brass	Silver plating
④	Tip spring-1	2	1	Phosphor bronze	Silver plating
③	Center pin terminal	1	1	Brass	Silver plating
②	Center pin		1	Copper alloy	Nickel plating
①	Housing		1	PBT	Black
NO.	DESCRIPTION		QTY	MATERIAL	REMARK

CONTACT 建倚科技股份有限公司
CONTACT TECHNOLOGY CORP.

TOLERANCE UNLESS OTHERWISE STATED :	Up to 5 ±0.2	3RD. ANGEL'S	UNITS	MM
	Above 5 ~ 15 ±0.3			
	Above 15 ~ 30 ±0.4			
	Above 30 ~ 50 ±0.5			
	Angle ±0.3			

DRAWN BY:	DATE	MAT'L	TITLE	JACK
Jack Lu	05/07/15		MODLE	DC JACK
CHECKED BY:	DATE	FINISH	SCALE	1 : 1
Jacky Chen	05/07/15		DWG NO.	DC-074S-x-S141
APPROVED BY:	DATE	SHEET NO.	PART NO.	DC-074S-x-S141
Tony Kao	05/07/15	1 of 1		
			SIZE	A4
			VER	R1

1	更新材質	Jack	050715
ITEM NO.	DESCRIPTION	DRAWN	DATE