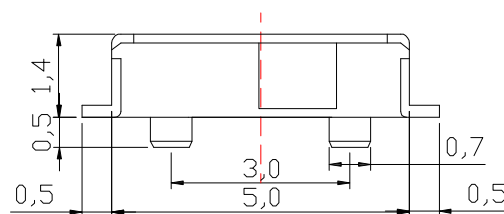
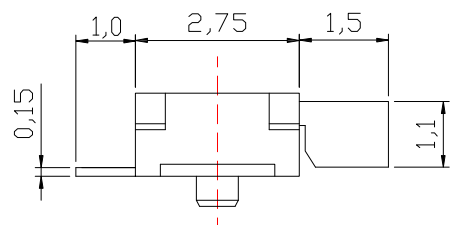


**P.C.B LAND PATTERN**



**SPECIFICATIONS**

Rating	50mA , 12V DC
Contact Resistance	70mΩ Max.
Dielectric Withstanding Voltage	AC 250 V(50Hz)1min
Insulation Resistance	100MΩ Min.
Operating Force	150 ± 50gf
Operating Life	10,000 cycles
Travel	1.0 ± 0.2mm

NO.	DESCRIPTION	QTY	MATERIAL	PLATING
F	SPRING STRIP	1	SUS	
E	TERMINAL	1	PHOSPHOR BRONZE	Ag plated
D	CLIP	1	QBE2	Ag plated
C	COVER	1	PHOSPHOR BRONZE	Ag plated
B	BASE	1	NYLON	Black
A	SLIDER	1	NYLON	White

**CONTACT** 建倚科技股份有限公司  
**CONTACT TECHNOLOGY CORP.**

TOLERANCE UNLESS OTHERWISE STATED:  
 Up to 5 ±0.2  
 Above 5 ~ 15 ±0.3  
 Above 15 ~ 30 ±0.4  
 Above 30 ~ 50 ±0.5  
 Angle ±0.3°

3RD. ANGEL'S



UNITS MM

DRAWN BY:	DATE	MAT'L	TITLE	SWITCH
Jack Lu	10/24/23		MODLE	SMT SLIDE SWICTH
CHECKED BY:	DATE	SCALE	DWG NO.	SS-B92AP-W-S463
Jacky Chen	10/24/23	1 : 1	PART NO.	SS-B92AP-W-S463
APPROVED BY:	DATE	SHEET NO.		
Tony Kao	10/24/23	1 of 1		

ITEM NO.	DESCRIPTION	DRAWN	DATE