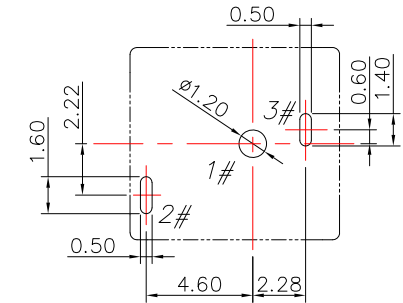
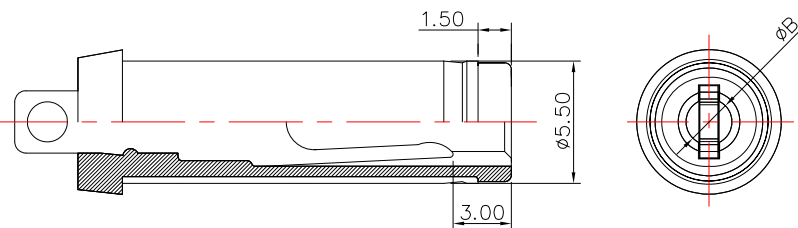
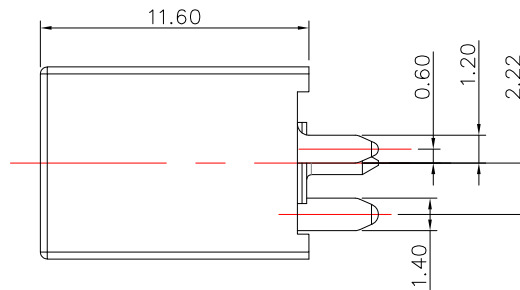
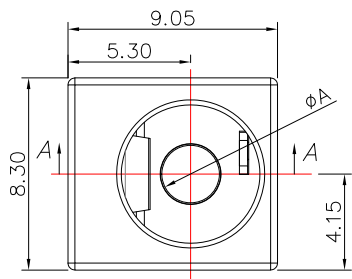


SECTION A-A

2.5	$\phi 2.5^{+0}_{-0.10}$	$\phi 2.55^{+0.1}$
2.0	$\phi 2.0^{+0}_{-0.10}$	$\phi 2.05^{+0.1}$
1.65	$\phi 1.65^{+0}_{-0.10}$	$\phi 1.7^{+0.1}$
PART NO.	CENIER PIN DIA. ϕA	PLUG DIA. ϕB



PCB LAYOUT
TOP VIEW



RECOMMENDED PLUG
 $\phi 5.5$ PLUG

MODEL NO.	DC-D3039JV-x-S457
SCHMATIC	

SPECIFICATION

1. Rating : DC 24V, 7.0A
2. Insulation resistance : $\geq 100M\Omega$
3. Withstand voltage : 500VAC
4. Insertion and extraction force : 3-30N
5. Life test : 5,000 cycles

④	CONTACT PIN	1	H59	Ni plating
③	SHUNT CONTACT	1	Brass	Tin Plating
②	TIP SPRING	1	Phosphor Bronze	Tin Plating
①	HOUSING	1	PA10T	Black
NO.	DESCRIPTION	QTY	MATERIAL	PLATING

CONTACT 建倚科技股份有限公司
CONTACT TECHNOLOGY CORP.

TOLERANCE UNLESS OTHERWISE STATED :
 Up to 5 ± 0.2
 Above 5 ~ 15 ± 0.3
 Above 15 ~ 30 ± 0.4
 Above 30 ~ 50 ± 0.5
 Angle $\pm 0.3^\circ$

3RD. ANGEL'S

UNITS MM

DRAWN BY:	DATE	MAT'L	TITLE	JACK
Jack Lu	01/03/25	FINISH	MODLE	DC JACK 180度 插板
CHECKED BY:	DATE	SCALE	DWG NO.	DC-D3039JV-x-S457
Jacky Chen	01/03/25	1 : 1	PART NO.	DC-D3039JV-x-S457
APPROVED BY:	DATE	SHEET NO.	1 of 1	
Tony Kao	01/03/25			

ITEM NO.	DESCRIPTION	DRAWN	DATE