

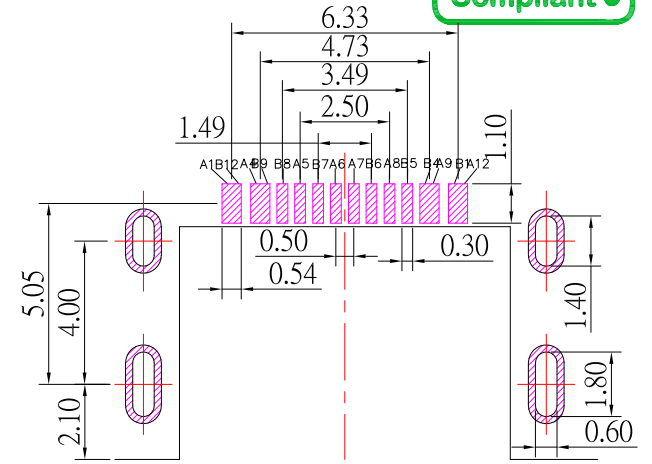
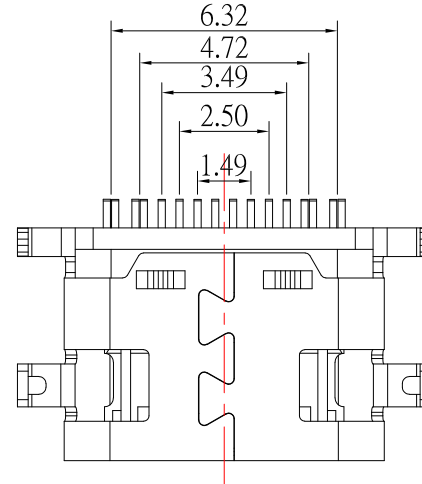
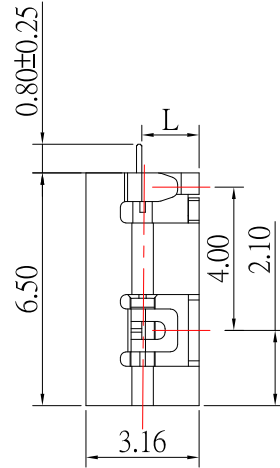
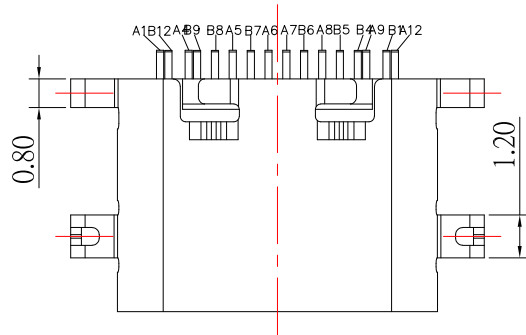
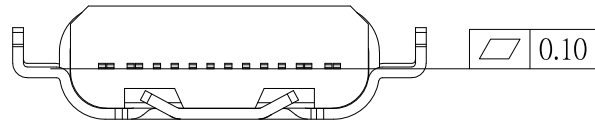
SBC-160M15x-20x-S410



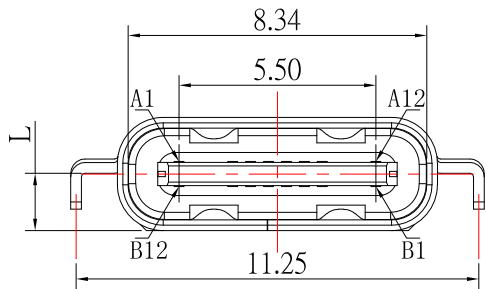
	A	B	C	D
L	0.80	1.00	1.20	1.60

鍍層厚度:

Blank	: 1u"
2	: 15u"
3	: 30u"



RECOMMENDED P.C.B. LAYOUT



A1	GND	B12	GND
A2		B11	
A3		B10	
A4	VBUS	B9	VBUS
A5	CC1	B8	SBU 2
A6	D+	B7	D-
A7	D-	B6	D+
A8	SBU1	B5	CC 2
A9	VBUS	B4	VBUS
A10		B3	
A11		B2	
A12	GND	B1	GND

SPECIFICATIONS

Electrical:

1. Rating: 5.0 A
2. Dielectric Withstand Voltage: 100V AC
3. Contact Resistance: 40 mΩ Max
4. Insulation Resistance: 100 MΩ Min

Mechanical:

1. Connector Mate and Unmate Force
 - 1.1 Mate force: 5~20 N
 - 1.2 Unmate force: 8~20 N

Material:

1. Housing: LCP
2. Contact: C7025
3. Shell: SUS

Finish:

1. Contact: Plated Gold in Mating Area ;
Gold Plated on Solder Balls ;
Nickel under plated overall
2. Shell: Nickel under Plated surface layer

ITEM NO.	DESCRIPTION	DRAWN	DATE
3	更新材質:Housing: LCP	Jack	062124
2	更新材質	Jack	022224
1	更新材質:Housing: LCP	Jack	081822

CONTACT 建倚科技股份有限公司
CONTACT TECHNOLOGY CORP.

TOLERANCE UNLESS OTHERWISE STATED :

Up to 5	±0.2	3RD. ANGEL'S	UNITS	MM
Above 5 ~ 15	±0.3			
Above 15 ~ 30	±0.4			
Above 30 ~ 50	±0.5			
Angle	±0.3			

DRAWN BY:	DATE	MATL	TITLE	CONNECTOR
Jack Lu	06/21/24	FINISH	MODLE	USB C TYPE 2.0 母座沉板
CHECKED BY:	DATE	SCALE	DWG NO.	SBC-160M15x-20x-S410
Jacky Chen	06/21/24	1 : 1	PART NO.	SBC-160M15x-20x-S410
APPROVED BY:	DATE	SHEET NO.	1 of 1	
Tony Kao	06/21/24			