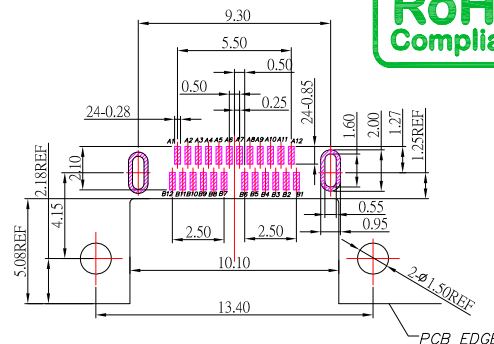
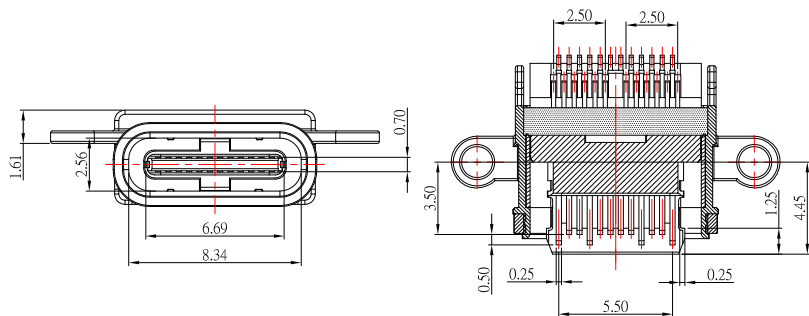
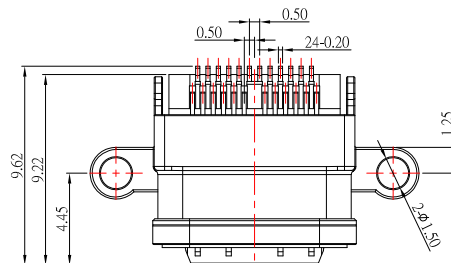
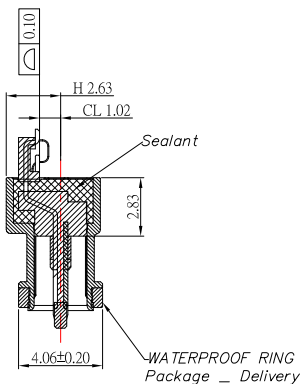
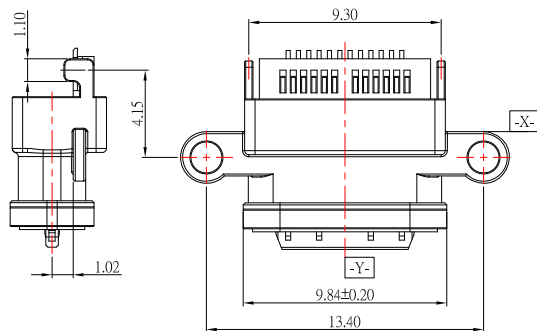
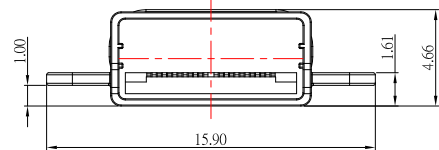




SBC-WP240M4-31x-S338

鍍層厚度:

| |
|-------------|
| Blank : 1u" |
| 2 : 15u" |
| 3 : 30u" |



P.C.B LAYOUT MOUNTING PATTERN

SPECIFICATIONS

Electrical:

1. Rating: 3.0A , 5.0V
- 2.Contact Resistance: 40 mΩ Max
- 3.Insulation Resistance: 100 MΩ Min
- 4.Dielectric Withstanding Voltage: 100V AC

Mechanical:

- 1.Connector Mate and Unmate Force
 - 1.1 Mate force: 5~20 N
 - 1.2 Unmate force: 8~20 N

Material:

- 1.Housing: High-Temp Plastic
- 2.Contact: Copper Alloy
- 3.Shell: SUS

Finish:

- 1.Contact: Plated Gold in Mating Area ;
Gold Plated on Solder Balls ;
Nickel under plated overall
- 2.Shell: Nickel under Plated surface layer

| USB TYPE-C FULL-FEATURED RECEPTACLE INTERFACE PIN ASSIGNMENTS | | | | | |
|---|-------------|---|-----|-------------|---|
| PIN | Signal Name | Description | PIN | Signal Name | Description |
| A1 | GND | Ground return | B12 | GND | Ground return |
| A2 | SSTxp1 | Positive half of first SuperSpeed TX differential pair | B11 | SSRxp1 | Positive half of first SuperSpeed RX differential pair |
| A3 | SSTxn1 | Negative half of first SuperSpeed TX differential pair | B10 | SSRxn1 | Negative half of first SuperSpeed RX differential pair |
| A4 | Ves | Bus Power | B9 | VBS | Bus Power |
| A5 | CC1 | Configuration Channel | B8 | SRE2 | Sideband Use (SRU) |
| A6 | Dp1 | Positive half of the USB 2.0 differential pair=Position 1 | B7 | Dn2 | Negative half of the USB 2.0 differential pair=Position 2 |
| A7 | Dn1 | Negative half of the USB 2.0 differential pair=Position 1 | B6 | Dp2 | Positive half of the USB 2.0 differential pair=Position 2 |
| A8 | SRU1 | Sideband Use (SRU) | B5 | CC2 | Configuration Channel |
| A9 | VBS | Bus Power | B4 | VBS | Bus Power |
| A10 | SSRx2 | Negative half of second SuperSpeed RX differential pair | B3 | SSTx2 | Positive half of second SuperSpeed TX differential pair |
| A11 | SSRx2 | Positive half of second SuperSpeed RX differential pair | B2 | SSTx2 | Negative half of second SuperSpeed TX differential pair |
| A12 | GND | Ground return | B1 | GND | Ground return |

CONTACT 建倚科技股份有限公司
CONTACT TECHNOLOGY CORP.

TOLERANCE UNLESS OTHERWISE STATED:
Up to 5 ±0.2
Above 5 ~ 15 ±0.3
Above 15 ~ 30 ±0.4
Above 30 ~ 50 ±0.5
Angle ±0.3°

3RD. ANGEL'S



UNITS MM

| | | | | |
|--------------|----------|-----------|----------|------------------------------|
| DRAWN BY: | DATE | MAT'L | TITLE | CONNECTOR |
| Jack Lu | 03/23/22 | | | |
| CHECKED BY: | DATE | FINISH | MODLE | USB 3.1 TYPE C 沉板式防水型 CL1.02 |
| Jacky Chen | 03/23/22 | | | |
| APPROVED BY: | DATE | SCALE | DWG NO. | SBC-WP240M4-31x-S338 |
| Tony Kao | 03/23/22 | 1 : 1 | PART NO. | SBC-WP240M4-31x-S338 |
| | | SHEET NO. | 1 of 2 | SIZE A4 |
| | | | | VER R2 |

| | | | |
|----------|-----------------------|-------|--------|
| 2 | 更新PCB LAYOUT尺寸 | Jack | 032322 |
| 1 | 新增PCB LAYOUT尺寸和O-RING | Jack | 032222 |
| ITEM NO. | DESCRIPTION | DRAWN | DATE |

Shell panel

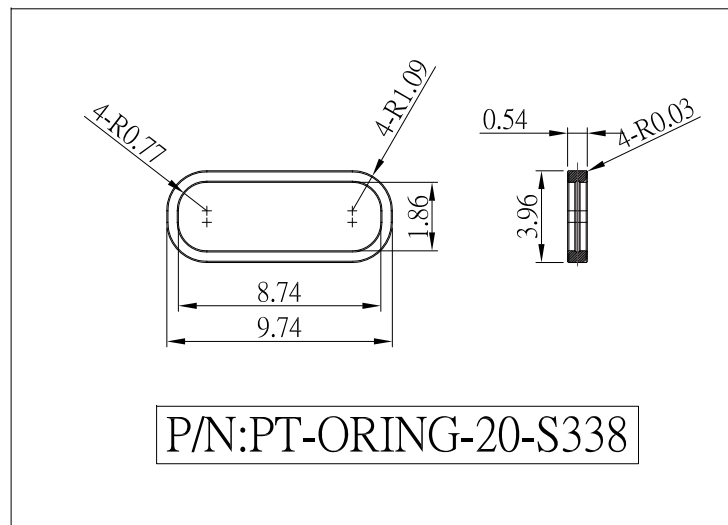
seal ring

PCB

Front and rear assembly mode

Shell panel to seal ring
and reduction 0.55min
(recommended compression
is 40-50% of seal ring
diameter)

Shell panel to seal ring and reduction 0.55min
(recommended compression is
40-50% of seal ring
diameter)



CONTACT 建倚科技股份有限公司
CONTACT TECHNOLOGY CORP.

TOLERANCE UNLESS OTHERWISE STATED:
Up to 5 ±0.2
Above 5 ~ 15 ±0.3
Above 15 ~ 30 ±0.4
Above 30 ~ 50 ±0.5
Angle ±0.3°

3RD. ANGEL'S

UNITS MM

| | | | | |
|--------------|----------|-----------|----------|------------------------------|
| DRAWN BY: | DATE | MAT'L | TITLE | CONNECTOR |
| Jack Lu | 03/23/22 | | MODLE | USB 3.1 TYPE C 沉板式防水型 CL1.02 |
| CHECKED BY: | DATE | FINISH | DWG NO. | SBC-WP240M4-31x-S338 |
| Jacky Chen | 03/23/22 | | SCALE | 1 : 1 |
| APPROVED BY: | DATE | SHEET NO. | PART NO. | SBC-WP240M4-31x-S338 |
| Tony Kao | 03/23/22 | 2 of 2 | | |

| | | | |
|----------|-----------------------|-------|--------|
| 2 | 更新PCB LAYOUT尺寸 | Jack | 032322 |
| 1 | 新增PCB LAYOUT尺寸和O-RING | Jack | 032222 |
| ITEM NO. | DESCRIPTION | DRAWN | DATE |