

B12	A1
B9	A4
B8	A5
B7	A6
B6	A7
B5	A8
B4	A9
B1	A12

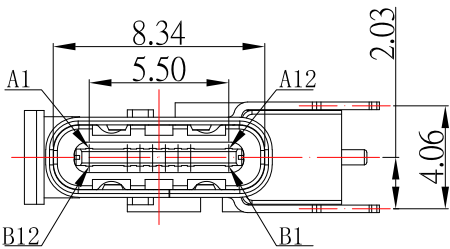
RECOMMENDED P.C.B. LAYOUT

SBC-160P3-20x-S410

鍍層厚度:

Blank : 1u"
2 : 15u"
3 : 30u"

A1	GND	B12	GND
A2		B11	
A3		B10	
A4	VBUS	B9	VBUS
A5	CC1	B8	SBU2
A6	D+	B7	D-
A7	D-	B6	D+
A8	SBU1	B5	CC2
A9	VBUS	B4	VBUS
A10		B3	
A11		B2	
A12	GND	B1	GND



SPECIFICATIONS

Electrical:

1. Rating: 5.0 A
2. Dielectric Withstand Voltage: 100V AC
3. Contact Resistance: 40 mΩ Max
4. Insulation Resistance: 100 MΩ Min

Mechanical:

1. Connector Mate and Unmate Force
 - 1.1 Mate force: 5~20 N
 - 1.2 Unmate force: 8~20 N

Material:

1. Housing: LCP
2. Contact: C7025
3. Shell: SUS

Finish:

1. Contact: Plated Gold in Mating Area ;
Gold Plated on Solder Balls ;
Nickel under plated overall
2. Shell: Nickel under Plated surface layer



				DRAWN BY: Jack Lu		DATE: 01/16/26		MATL		TITLE: CONNECTOR	
				CHECKED BY: Jacky Chen		DATE: 01/16/26		FINISH		MODLE: USB 3.1 側插母座 16 PIN	
				APPROVED BY: Tony Kao		DATE: 01/16/26		SCALE: 1 : 1		DWG NO.: SBC-160P3-20x-S410	
				SHEET NO.: 1 of 1		PART NO.: SBC-160P3-20x-S410		SIZE: A4		VER: R1	

TOLERANCE UNLESS OTHERWISE STATED :	Up to 5 ±0.2	Above 5 ~ 15 ±0.3	Above 15 ~ 30 ±0.4	Above 30 ~ 50 ±0.5	Angle ±0.3	3RD. ANGEL'S	UNITS	MM
-------------------------------------	--------------	-------------------	--------------------	--------------------	------------	--------------	-------	----