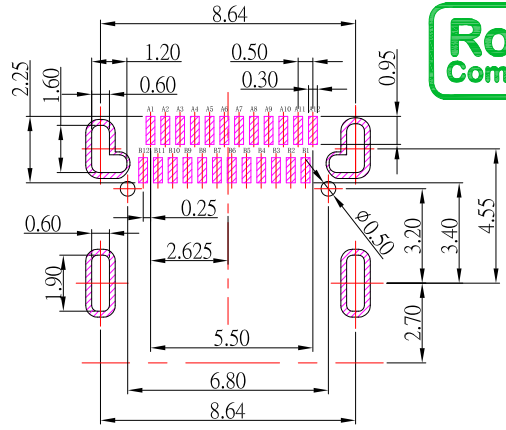




SBC-240S4-32x-S242

鍍層厚度:

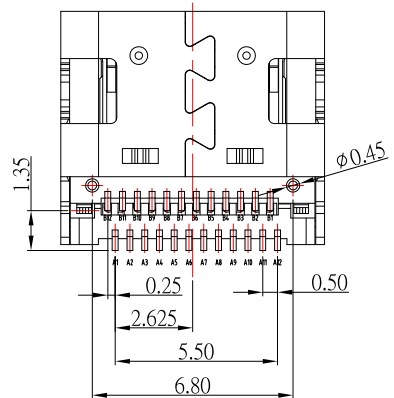
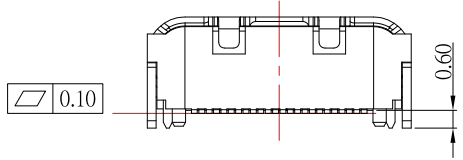
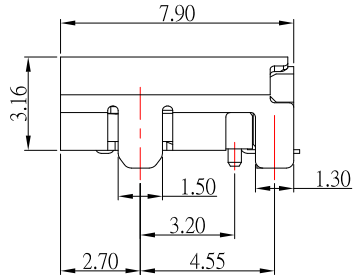
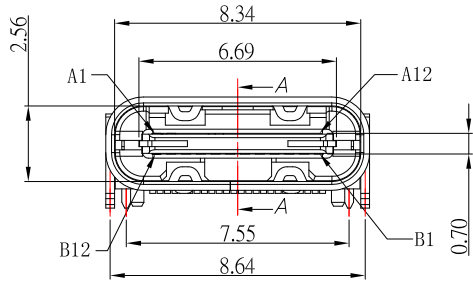
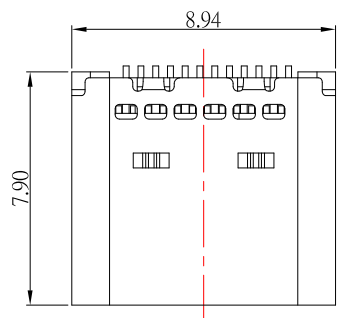
Blank	: 1u"
2	: 15u"
3	: 30u"



P.C.B LAYOUT MOUNTING PATTERN

SPECIFICATIONS

- Electrical:**
- Rating: 3.0 A
 - Dielectric Withstand Voltage: 100V AC
 - Contact Resistance: 40 mΩ Max
 - Insulation Resistance: 100 MΩ Min
- Mechanical:**
- Connector Mate and Unmate Force
 - Mate force: 5~20 N
 - Unmate force: 8~20 N
- Material:**
- Housing: LCP
 - Contact: Copper Alloy
 - Shell: SUS
- Finish:**
- Contact: Plated Gold in Mating Area ;
Tin Plated on Solder Balls ;
Nickel under plated overall
 - Shell: Nickel under Plated surface layer



CONTACT 建倚科技股份有限公司
CONTACT TECHNOLOGY CORP.

TOLERANCE UNLESS OTHERWISE STATED:

Up to 5	±0.2
Above 5 ~ 15	±0.3
Above 15 ~ 30	±0.4
Above 30 ~ 50	±0.5
Angle	±0.3°

3RD. ANGEL'S

DRAWN BY:	DATE	MAT'L	TITLE	CONNECTOR
Jack Lu	01/21/21			
CHECKED BY:	DATE	FINISH	MODLE	TYPE CF 雙排 SMT 有柱 GEN 2
Jacky Chen	01/21/21			
APPROVED BY:	DATE	SCALE	DWG NO.	SBC-240S4-32x-S242
Tony Kao	01/21/21	1 : 1	PART NO.	SBC-240S4-32x-S242
		SHEET NO.	1 of 1	SIZE A4
				VER R

ITEM NO.	DESCRIPTION	DRAWN	DATE