

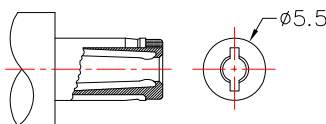
MODEL NO.	DC-086HS-x
SCHEMATIC	
CENTER PIN	ø1.65mm
	ø2mm
	ø2.5mm

***MATERIAL**

- CENTRE PIN :COPPER
- TERMINAL 1 :BRASS
- TERMINAL 2 :PHOSPHOR BRONZE
- TERMINAL 3 :BRASS
- SHIELD-A :BRASS
- SHIELD-B :STAINLESS STELL
- HOUSING :PA6T

SPECIFICATION

1. Rating : DC 16V 5.0A
2. Contact resistance : ≤ 50mΩ
3. Insulation resistance : ≥ 100MΩ
4. Withstand voltage : 500VAC
5. Insertion and extraction force : 3-30N
6. life test : 5,000 cycles



DC MATE PLUG

PCB LAYOUT
(TOP VIEW)

CONTACT 建倚科技股份有限公司
CONTACT TECHNOLOGY CORP.

TOLERANCE UNLESS OTHERWISE STATED :
 Up to 5 ±0.2
 Above 5 ~ 15 ±0.3
 Above 15 ~ 30 ±0.4
 Above 30 ~ 50 ±0.5
 Angle ±0.3

3RD. ANGEL'S



UNITS MM

DRAWN BY:	DATE	MAT'L	TITLE	JACK
Jack Lu	08/12/14		MODLE	DC JACK
CHECKED BY:	DATE	FINISH	DWG NO.	DC-086HS-x
Jacky Chen	08/12/14		PART NO.	DC-086HS-x
APPROVED BY:	DATE	SCALE	SHEET NO.	1 of 1
Tony Kao	08/12/14	1 : 1		

ITEM NO.	DESCRIPTION	DRAWN	DATE
1	新增SPEC	Jack	081214

SIZE	A4
VER	R1