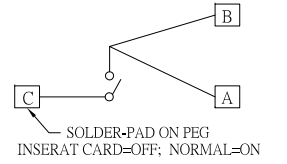
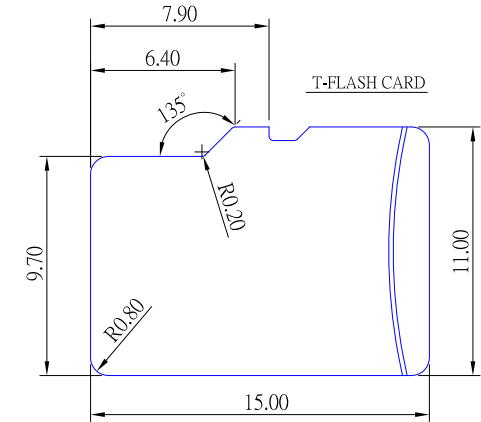
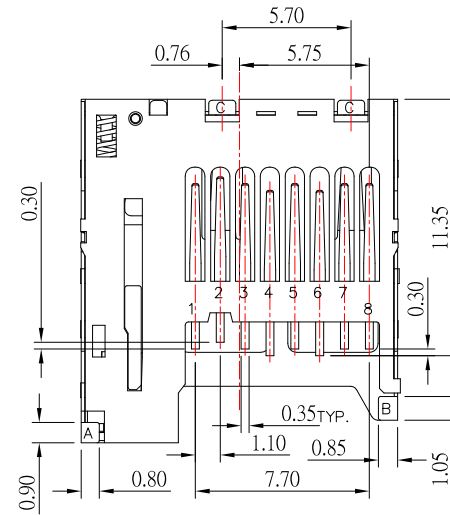
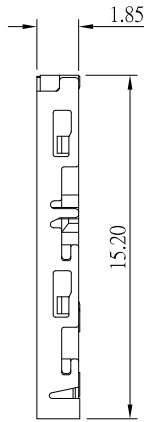
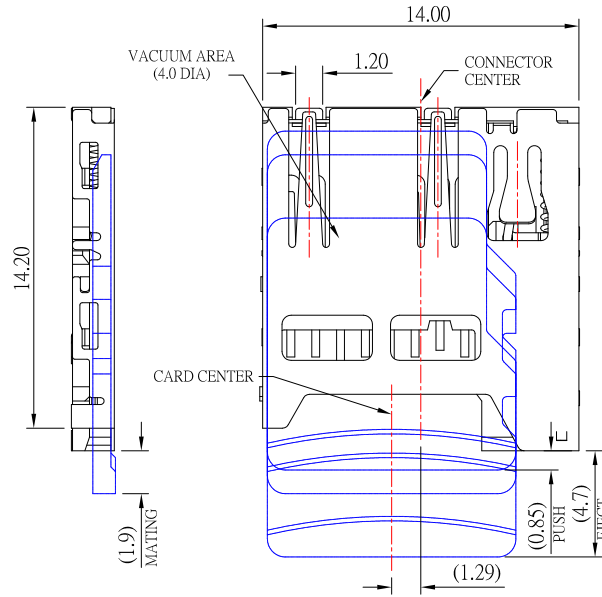
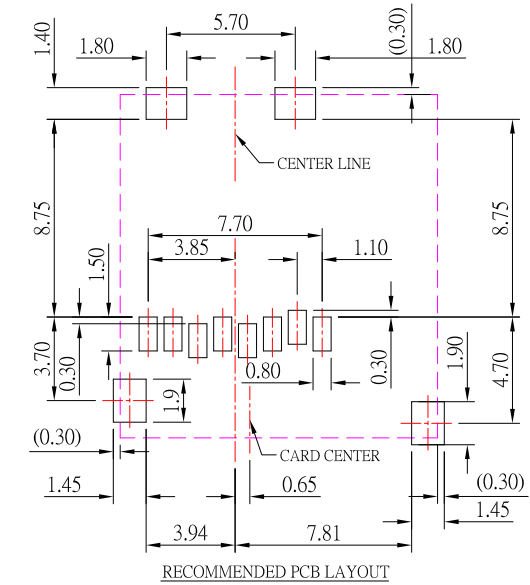
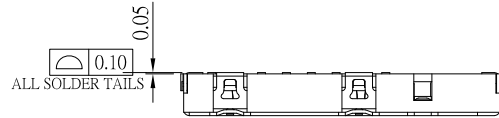


CIRCUIT DIAGRAM FOR DETECT SWITCH  
SOLDER-PAD ON SHELL



PIN NO.	NAME	TYPE	DESCRIPTION
1	DAT2	I/O/PP	DATE LINE(BIT2)
2	CD/ DAT3	I/O/PP	CARD DETECT/DATE LINE(BIT3)
3	CMD	PP	COMMAND RESPONSE
4	VDD	S	SUPPLY VOLTAGE
5	CLK	I	COLCK
6	VSS	S	SUPPLY VOLTAGE GROUND
7	DAT0	I/O/PP	DATE LINE(BIT0)
8	DAT1	I/O/PP	DATE LINE(DIT1)



**SPECIFICATIONS:**

- CONTACT CURRENT RATING: 0.5A.
- CONTACT RESISTANCE: 100 mΩ MAX.;
- INSULATION RESISTANCE: 100MΩ MIN.;
- DIELECTRIC WITHSTANDING: 500V AC MIN.;
- DURABILITY: 5,000 CYCLES MIN.;
- CONNECTOR MATING FORCES: 29.4N (3.00Kgf) MAX.;

ITEM	PART NAME	QTY	MATERIAL	DESCRIPTION	REMARK
⑧	RETENTION CONTACT	1	STAINLESS STEEL	NO PLATED	
⑦	SPRING	1	STAINLESS STEEL	Ni	
⑥	SLIDER	1	PA9T	BLACK COLOR,UL94V-0	
⑤	CAM ROD	1	STAINLESS STEEL	NO PLATED	
④	DATA CONTACT	8	COPPER ALLOY	Au/ Ni/GOLD FLASH	
③	DETECTIVE CONTACT	1	COPPER ALLOY	GOLD FLASH/ Ni	
②	SHELL	1	STAINLESS STEEL	GOLD FLASH/ Ni	
①	HOUSING	1	LCP	BLACK COLOR,UL94V-0	

ITEM NO.	DESCRIPTION	DRAWN	DATE
4	更新材質	Jack	092316
3	更新為A0板	Jack	082316
2	更新CARD CENTER標示位置	Jack	011215
1	新增PCB尺寸L50	Jack	072913

**CONTACT** 建倚科技股份有限公司  
**CONTACT TECHNOLOGY CORP.**

TOLERANCE UNLESS OTHERWISE STATED:  
 Up to 5 ±0.2  
 Above 5 ~ 15 ±0.3  
 Above 15 ~ 30 ±0.4  
 Above 30 ~ 50 ±0.5  
 Angle ±0.3

3RD. ANGEL'S

UNITS MM

DRAWN BY:	DATE	MAT'L	TITLE	CONNECTOR
Jack Lu	09/23/16			
CHECKED BY:	DATE	FINISH	MODLE	T-Flash Card Socket 常閉式
Jacky Chen	09/23/16			
APPROVED BY:	DATE	SCALE	DWG NO.	SD-TFC0001S10-S119
Tony Kao	09/23/16	1 : 1		
		SHEET NO.	PART NO.	SD-TFC0001S10-S119
		1 of 1		
				SIZE A4
				VER A1