

IP65



SBC-WP240M1-31x-S338

鍍層厚度:

Blank : 1u"
2 : 15u"
3 : 30u"

SPECIFICATIONS

Electrical:

1. Rating: 5.0A(VBUS&GND),0.25A(Other Pin)
- 2.Contact Resistance: 40 mΩ Max
- 3.Insulation Resistance: 100 MΩ Min
- 4.Dielectric Withstanding Voltage: 100V AC

Mechanical:

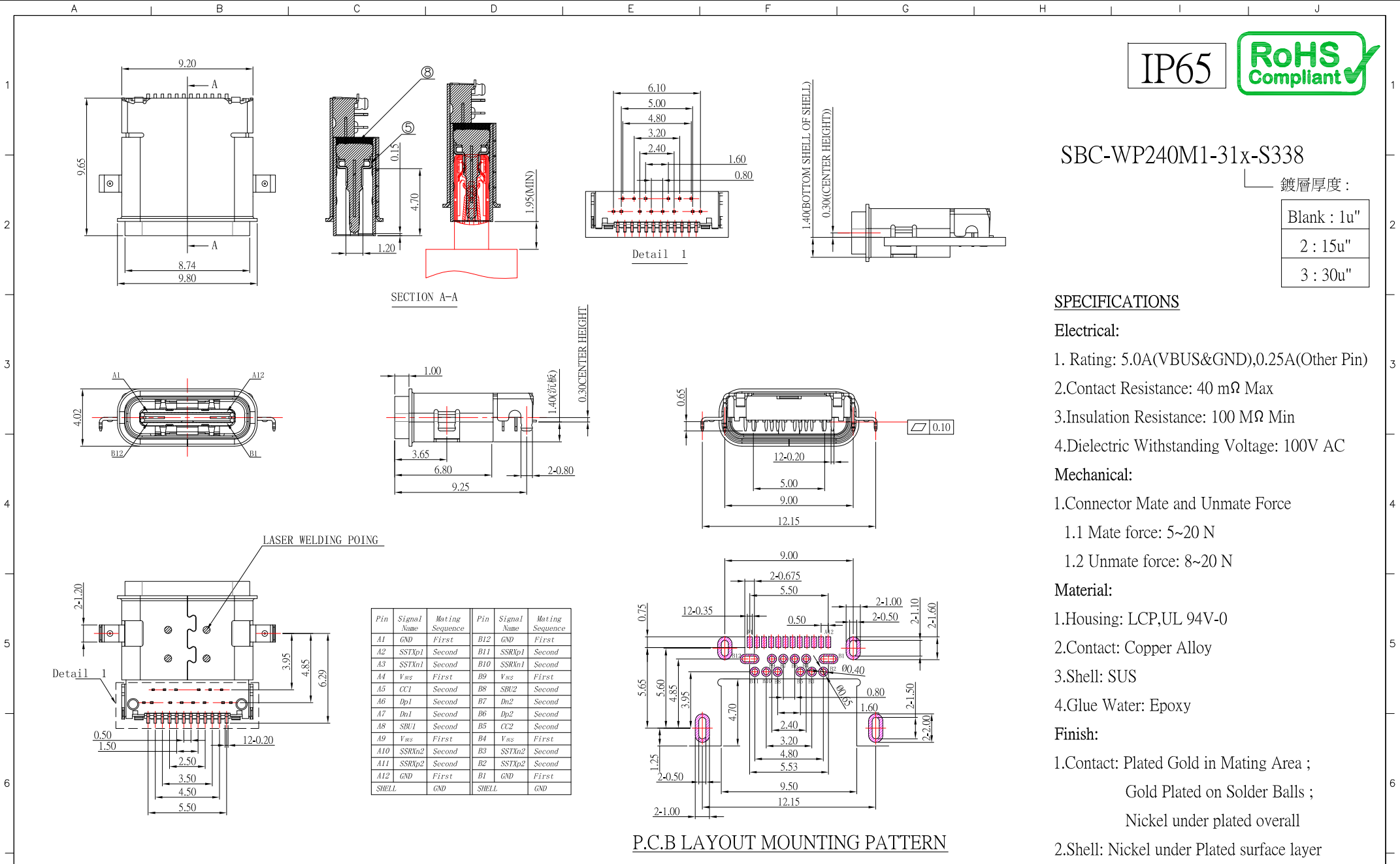
- 1.Connector Mate and Unmate Force
 - 1.1 Mate force: 5~20 N
 - 1.2 Unmate force: 8~20 N

Material:

- 1.Housing: LCP,UL 94V-0
- 2.Contact: Copper Alloy
- 3.Shell: SUS
- 4.Glue Water: Epoxy

Finish:

- 1.Contact: Plated Gold in Mating Area ;
Gold Plated on Solder Balls ;
Nickel under plated overall
- 2.Shell: Nickel under Plated surface layer



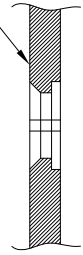
				建倚科技股份有限公司 CONTACT TECHNOLOGY CORP.		DRAWN BY: Jack Lu CHECKED BY: Jacky Chen APPROVED BY: Tony Kao	DATE: 09/07/17 DATE: 09/07/17 DATE: 09/07/17	MAT'L FINISH SCALE: 1 : 1 SHEET NO. 1 of 2	TITLE: CONNECTOR MODLE: USB 3.1 TYPE C 沉板式防水型 IP65 DWG NO. SBC-WP240M1-31x-S338 PART NO. SBC-WP240M1-31x-S338	SIZE: A4 VER: R1
1	更新防水等級	Jack	090717	TOLERANCE UNLESS OTHERWISE STATED : Up to 5 ±0.2 Above 5 ~ 15 ±0.3 Above 15 ~ 30 ±0.4 Above 30 ~ 50 ±0.5 Angle ±0.3°	3RD. ANGEL'S	UNITS	MM			

建議密封方式

IP65

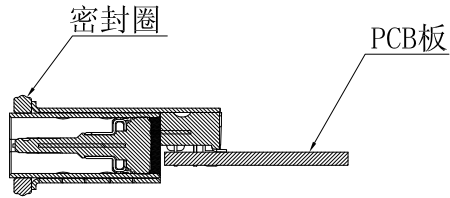


機殼面板

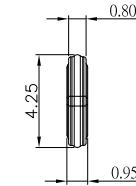
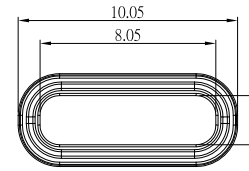


密封圈

PCB板



前後組裝方式



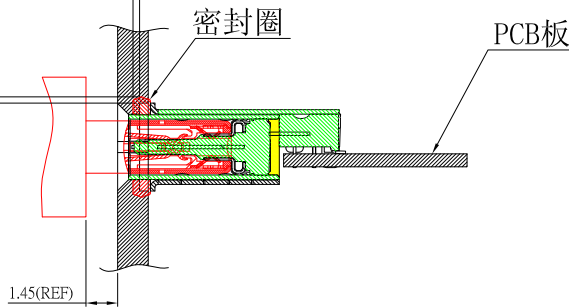
建議防水圈規格

機殼面板對密封圈與縮量0.30Min
(建議壓縮量為密封圈直徑大小40-50%)

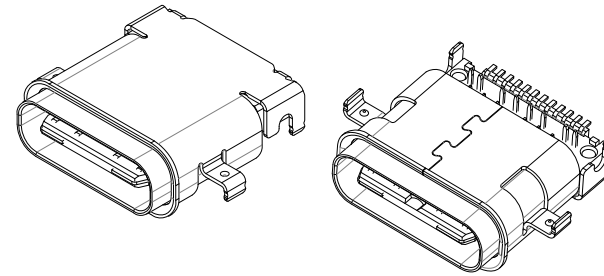
機殼面板對密封圈與縮量0.30Min
(建議壓縮量為密封圈直徑大小40-50%)

密封圈

PCB板



組裝面板後公母頭對插示意圖



CONTACT 建倚科技股份有限公司
CONTACT TECHNOLOGY CORP.

TOLERANCE UNLESS OTHERWISE STATED:
Up to 5 ±0.2
Above 5 ~ 15 ±0.3
Above 15 ~ 30 ±0.4
Above 30 ~ 50 ±0.5
Angle ±0.3°

3RD. ANGEL'S



UNITS MM

DRAWN BY:	DATE	MAT'L	TITLE	CONNECTOR
Jack Lu	09/07/17		MODLE	USB 3.1 TYPE C 沉板式防水型 IP65
CHECKED BY:	DATE	SCALE	DWG NO.	SBC-WP240M1-31x-S338
Jacky Chen	09/07/17	1 : 1	PART NO.	SBC-WP240M1-31x-S338
APPROVED BY:	DATE	SHEET NO.	2 of 2	
Tony Kao	09/07/17			

1	更新防水等級	Jack	090717
ITEM NO.	DESCRIPTION	DRAWN	DATE