



SBC-240S6-31x-S338

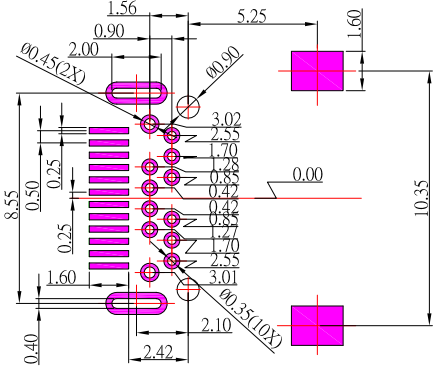
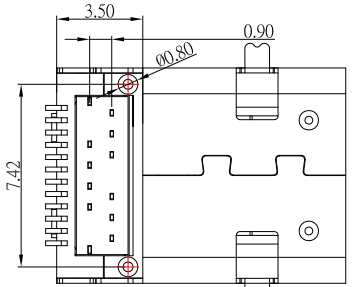
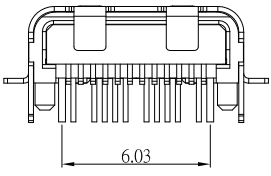
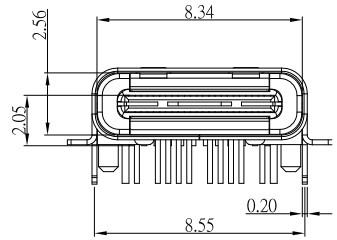
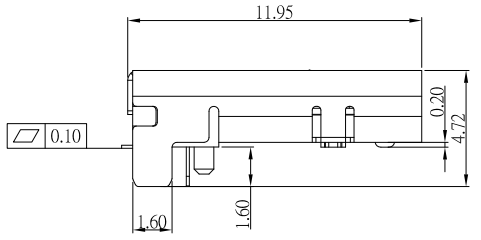
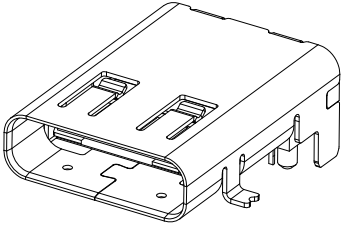
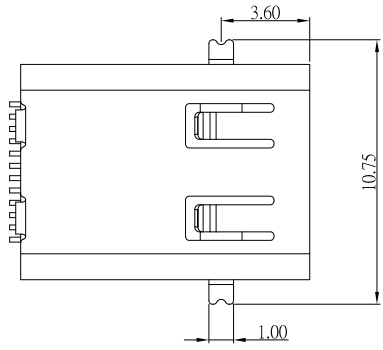
鍍層厚度:

Blank : 1u"
2 : 15u"
3 : 30u"

SPECIFICATIONS

- Electrical:**
- Rating: 5.0 A for VBUS , 1.25A for GND PIN
0.25A for other
 - VOLTAGE: 20V MAX
 - Dielectric Withstand Voltage: 100V AC
 - Contact Resistance: 40 mΩ Max
 - Insulation Resistance: 100 MΩ Min
- Mechanical:**
- Connector Mate and Unmate Force
 - Mate force: 5~20 N
 - Unmate force: 8~20 N

- Material:**
- Housing: LCP,UL 94V-0
 - Contact: PHOSPHOR BRONZE
 - Shell: SUS
- Finish:**
- Contact: Plated Gold in Mating Area ;
Tin Plated on Solder Balls ;
Nickel under plated overall
 - Shell: Nickel under Plated surface layer



RECOMMENDED P.C.B. LAYOUT

USB TYPE-C FULL-FEATURED RECEPTACLE INTERFACE PIN ASSIGNMENTS

PIN	Signal Name	Description	PIN	Signal Name	Description
A1	GND	Ground return	B12	GND	Ground return
A2	SSTxp1	Positive half of first SuperSpeed TX differential pair	B11	SSRx1p	Negative half of first SuperSpeed RX differential pair
A3	SSTxm1	Negative half of first SuperSpeed TX differential pair	B10	SSRx1m	Positive half of first SuperSpeed RX differential pair
A4	Vbus	Bus Power	B9	Vbus	Bus Power
A5	CC1	Configuration Channel	B8	SRU2	Sideband Use (SRU)
A6	Dp1	Positive half of the USB 2.0 differential pair=Position 1	B7	Dn2	Negative half of the USB 2.0 differential pair=Position 2
A7	Dn1	Negative half of the USB 2.0 differential pair=Position 1	B6	Dp2	Positive half of the USB 2.0 differential pair=Position 2
A8	SRU1	Sideband Use (SRU)	B5	CC2	Configuration Channel
A9	Vbus	Bus Power	B4	Vbus	Bus Power
A10	SSRxm2	Negative half of second SuperSpeed RX differential pair	B3	SSTx2p	Positive half of second SuperSpeed TX differential pair
A11	SSRx2p	Positive half of second SuperSpeed RX differential pair	B2	SSTx2m	Negative half of second SuperSpeed TX differential pair
A12	GND	Ground return	B1	GND	Ground return



TOLERANCE UNLESS OTHERWISE STATED :
 Up to 5 ±0.2
 Above 5 ~ 15 ±0.3
 Above 15 ~ 30 ±0.4
 Above 30 ~ 50 ±0.5
 Angle ±0.3°
 3RD. ANGEL'S



UNITS MM

DRAWN BY:	DATE	MAT'L	TITLE	CONNECTOR
Jack Lu	09/05/16	FINISH	MODLE	TYPE C 板上 前SMT後DIP 加長型 L:12.0
CHECKED BY:	DATE	SCALE	DWG NO.	SBC-240S6-31x-S338
Jacky Chen	09/05/16	1 : 1	PART NO.	SBC-240S6-31x-S338
APPROVED BY:	DATE	SHEET NO.	1 of 1	
Tony Kao	09/05/16			

ITEM NO.	DESCRIPTION	DRAWN	DATE
1	更新為A0版	Jack	090516