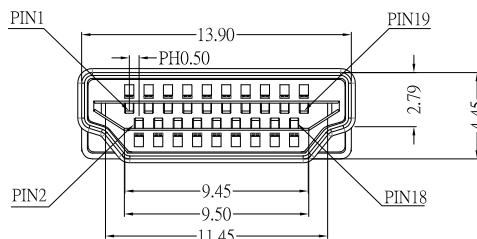
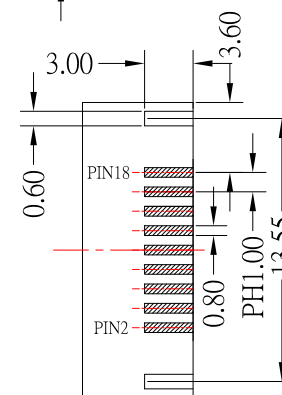
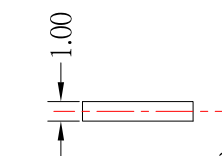
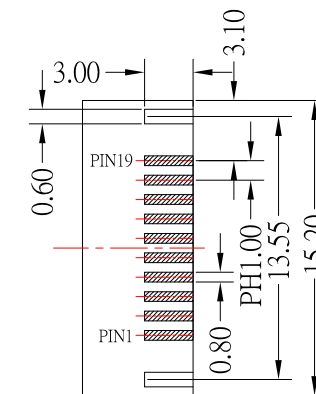
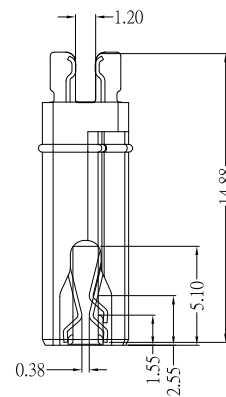
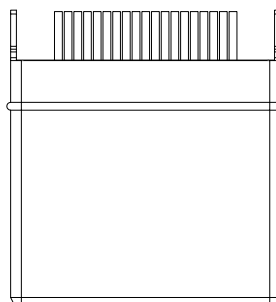
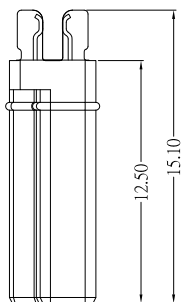
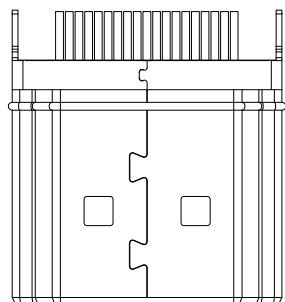
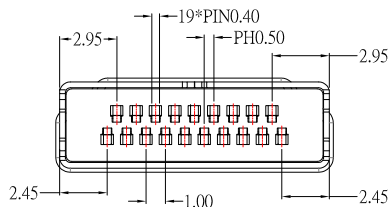




# HDMI-19APL3xx-S165

外殼材質:	Blank : BRASS	外殼電鍍材質:	G : Au
	I : SPCC		NI : Nickel



**NOTE :**

**1. SPECIFICATION:**

- 1.1 CURRENT RATING: 0.5 Amp Max.
- 1.2 VOLTAGE RATING: 40 V ac(r.m.s) Max.
- 1.3 CONTACT RESISTANCE: 10mΩ Max.
- 1.4 INSULATION RESISTANCE: 100MΩ Min.
- 1.5 DIELECTRIC WITHSTANDING VOLTAGE: AC 500V Min. (for 1 minute)
- 1.6 OPERATION TEMPERATURE RANGE: -25°C~85°C

**2. MECHANICAL**

- 2.1 INSERTION FORCE: 4.5KGF MAXIMUM
- 2.1 WITHDRAWAL FORCE: 1.0KGF MINIMUM; 4.0KGF MAXIMUM

**3. Material:**

- 3.1 Housing: LCP
- 3.2 Contact: BRASS
- 3.3 Shell: BRASS / SPCC

**4. Finish:**

- 4.1 Contact: Plated Gold in Mating Area ;  
Gold Plated on Solder Balls ;  
Nickel under plated overall
- 4.2 Shell: Nickel / Gold under Plated surface layer

**CONTACT** 建倚科技股份有限公司  
**CONTACT TECHNOLOGY CORP.**

TOLERANCE UNLESS OTHERWISE STATED :

Up to 5 ±0.2  
Above 5 ~ 15 ±0.3  
Above 15 ~ 30 ±0.4  
Above 30 ~ 50 ±0.5  
Angle ±0.3°

3RD. ANGEL'S



UNITS

MM

DRAWN BY:	DATE
Jack Lu	02/25/15
CHECKED BY:	DATE
Jacky Chen	02/25/15
APPROVED BY:	DATE
Tony Kao	02/25/15

MAT'L		TITLE	CONNECTOR
FINISH		MODLE	HDMI A TYPE 夾板公頭 H:1.2mm
SCALE	1 : 1	DWG NO.	HDMI-19APL3xx-S165
SHEET NO.	1 of 1	PART NO.	HDMI-19APL3xx-S165
		SIZE	A4
		VER	R3

ITEM NO.	DESCRIPTION	DRAWN	DATE
3	更新夾板尺寸	Jack	022515
2	更新鍍層代號及更新pcb layout尺寸	Jack	112714
1	更新鍍層代號	Jack	111214