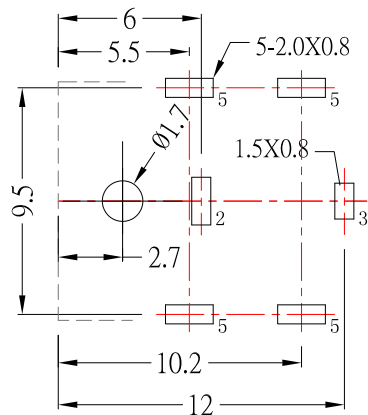
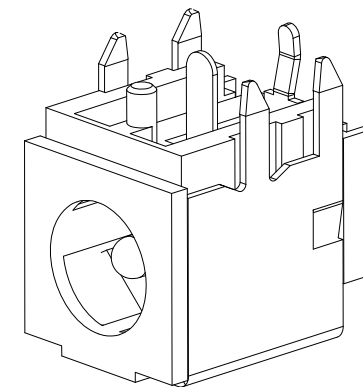
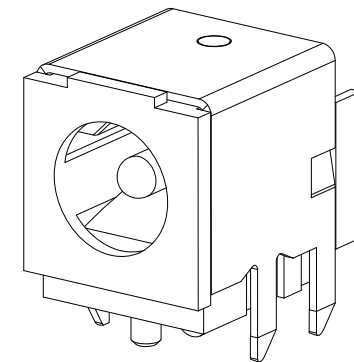


P.C.B LAYOUT  
TOP VIEW



MODEL NO.	DC-D101A-x-S125
SCHEMATIC	3 (4) 2
CENTER PIN	φ2.0 mm
	φ2.5 mm



SPECIFICATION

1. Rating : DC 30V 6.0A ;
2. Contact resistance :  $\leq 0.03 \Omega$  ;
3. Insulation resistance :  $\geq 100M \Omega$  (DC250V) ;
4. Withstand voltage : 500VAC ;
5. Insertion and extraction force : 3-20N;
6. life test : 5,000 cycles ◦

NO.	DESCRIPTION	QTY	MATERIAL	PLATING
5	CONTACT FOOT	1	BRASS	Ni-Plating
4	PIN	1	BRASS	Ni-Plating
3	CONTACT FOOT	1	BRASS	Ag-Plating
2	SPRING PIECE	1	PHOSPHOR BRONZE	Ag-Plating
1	HOUSING	1	HTN	

**CONTACT** 建倚科技股份有限公司  
CONTACT TECHNOLOGY CORP.

TOLERANCE UNLESS OTHERWISE STATED :  
 Up to 5 ±0.2  
 Above 5 ~ 15 ±0.3  
 Above 15 ~ 30 ±0.4  
 Above 30 ~ 50 ±0.5  
 Angle ±0.3°  
 3RD. ANGEL'S  
 UNITS MM

DRAWN BY:	DATE	MAT'L	TITLE	JACK
Jack Lu	12/21/15		MODLE	DC JACK
CHECKED BY:	DATE	FINISH	SCALE	1 : 1
Jacky Chen	12/21/15		DWG NO.	DC-D101A-x-S125
APPROVED BY:	DATE	SHEET NO.	PART NO.	DC-D101A-x-S125
Tony Kao	12/21/15	1 of 1		

ITEM NO.	DESCRIPTION	DRAWN	DATE
2	更新Rating	Jack	122115
1	圖面更新	FrankWu	073012